

## **STANDARD**

Each torque multiplier is tested according to the international standard DIN ISO 6789 & ASME B107.300-2010, in order to certify the product meets the quality and accuracy requirements of the mentioned standard.

## **ATTENTION**

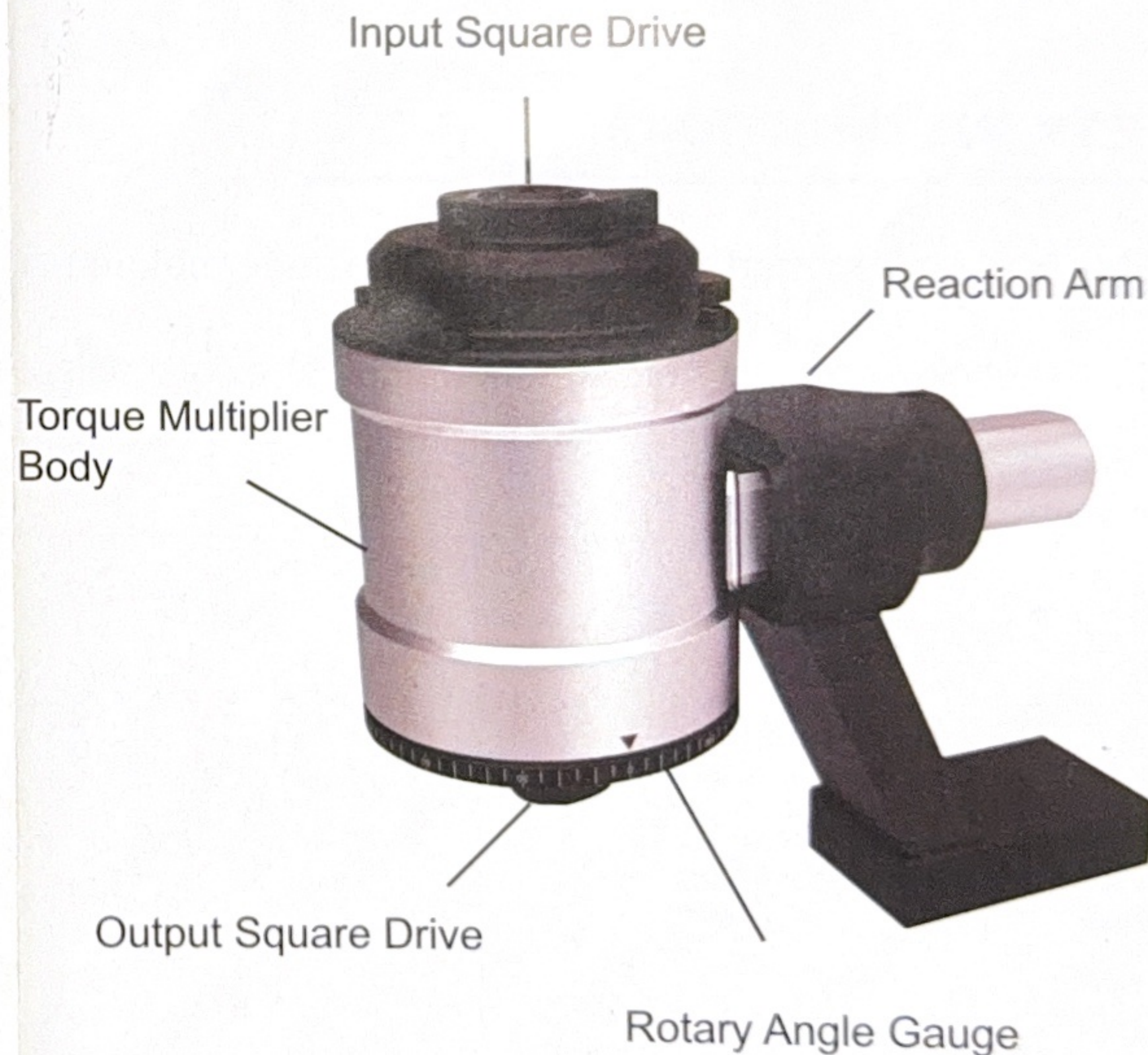
 **ELECTRICAL SHOCK**

 **ALWAYS USE GOGGLES WHILE USING HAND TOOLS**

# **TORQUE MULTIPLIER**

## **INSTRUCTION MANUAL**

---



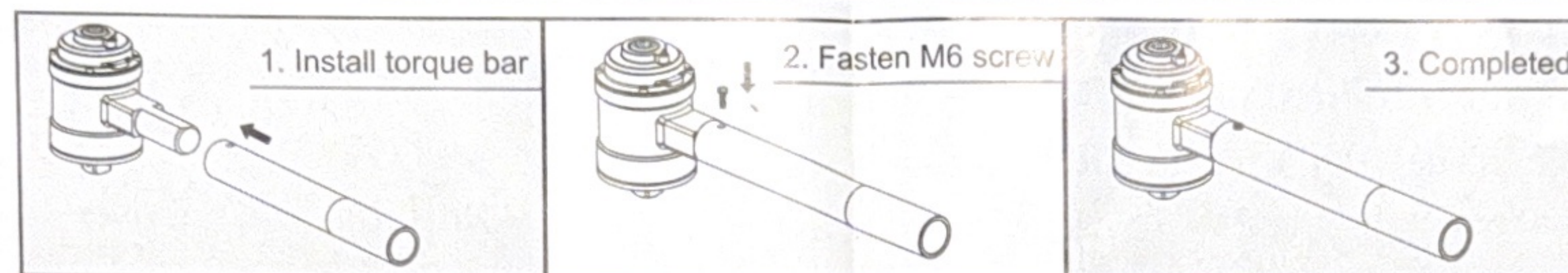
Set at "0" before loading.  
The angle can be adjusted as requirement.



## USE WITH REACTION ARM



## USE WITH STANDARD TORQUE BAR

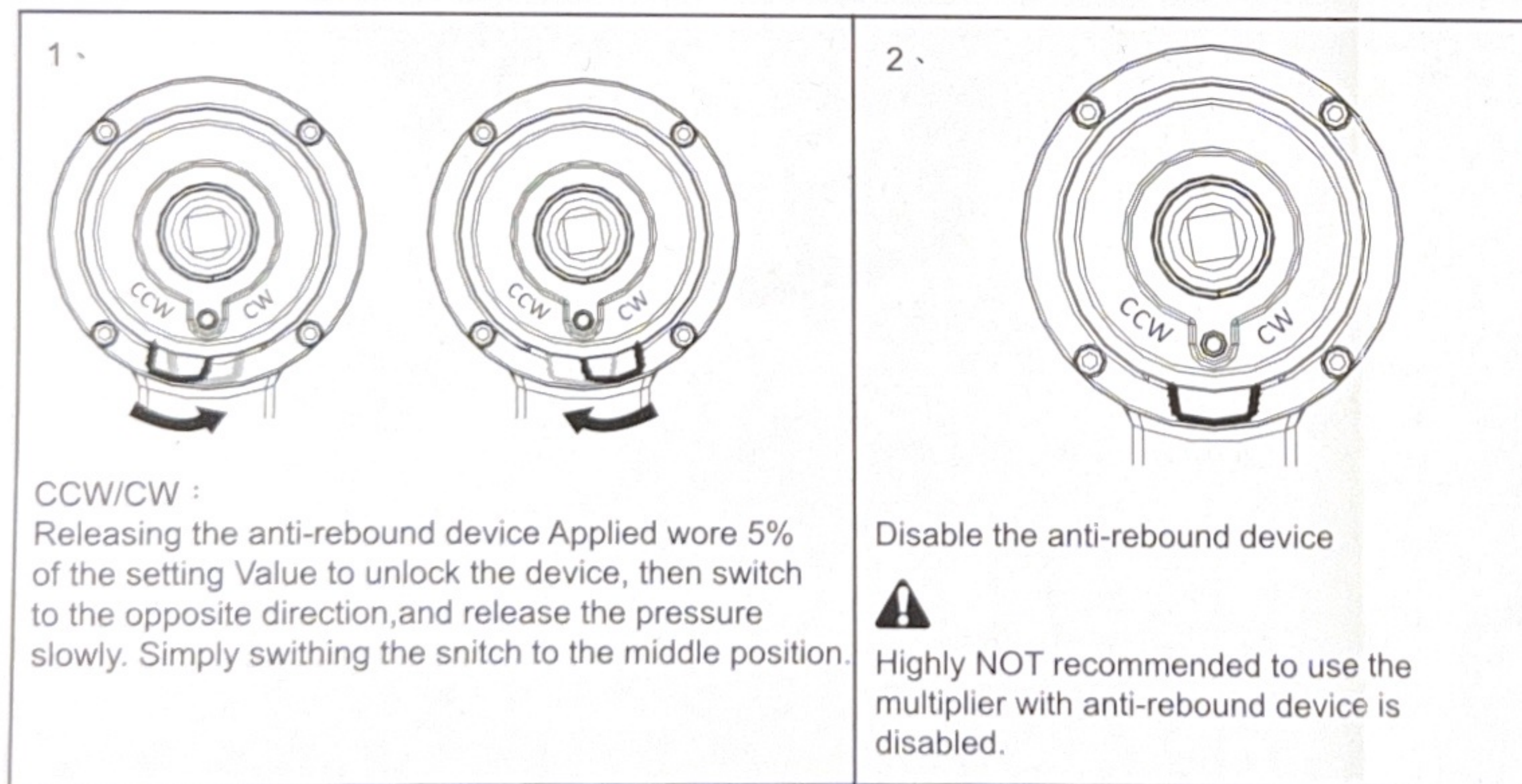


**! DON'T USE PNEUMATIC TOOL  
TOGETHER WITH THE MULTIPLIER.**

## SAFETY INSTRUCTIONS

1. Determine the required torque setting of fastener before use to avoid damage of wrench or multiplier.
2. The Reaction Arm must be positioned against a solid object or surface adjacent to the bolt to be tightened.

**FIGURE 1**



**FIGURE 2**

