



Features and benefits:

- Multiple weight capacity options: from 1t to 150t
- Polished Stainless Steel construction
- Ingress protection up to IP66 allowing for use in a variety of outdoor weather conditions (including high winds and heavy rain) *
- Compatible to fit standard metric rod-end bearing sizes
- Flexible bespoke options - customisable sizes and features
- Multiple thread options – including imperial and male or male/female end threads
- Additional option to include mating spherical rod-end bearings

* IP67 and submersible versions also available for use in marine environments

Ideal for measuring both tensile and compressive forces, the SP STC Series load cell has been engineered to the highest standards needed for exceedingly precise test results. The polished stainless steel casing provides durability and toughness for repeated use under a variety of conditions. The IP66 certificated ingress protection takes this robustness further, by allowing the STC to be used outdoors in a variety of environmental conditions such as dust winds, monsoon, snow, etc. It also includes indoor conditions, such as carpenter workshops, refurbishments or water maintenance.

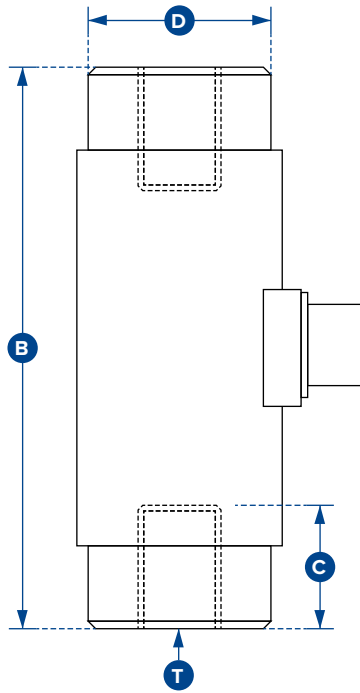
SP offer a large range of size options to cope with different levels of load forces to fit with specific measurement needs. Whatever the application, no matter how specific, Straightpoint can tailor the end threads to different sizes/combinations. End thread combinations are as shown:

Male to Male
Female to Female
Male to Female
Female to Male

Imperial thread sizes can also be supplied with the entire STC series.

SP will be more than happy to discuss specific requirements of a job/project and provide the upmost confidence to match specific requirements. SP can also provide an extensive range of associated products to help package a complete load monitoring/measuring system. This will, simultaneously, ensure the highest level of safety precaution whilst working.

For example: When paired with the SA700C Load Cell Transmitter, the operator will be able to wirelessly connect to the Handheld Plus (SW-HHP) digital handheld display and also to the SW-MWLC (Multiple Wireless Load cell Controller) software package for the ultimate in remote load monitoring set-ups.



Part Numbers SP Crosby	B	C	D	T	Weight (kgs)	Resolution (tonnes)
STC1T 2789116	76	16	Ø31	M12 x 1.25	0.4	0.001
STC2T 2789118	76	16	Ø31	M12 x 1.25	0.4	0.002
STC3T 2789120	84	22	Ø38	M20 x 1.5	0.7	0.005
STC5T 2789122	84	22	Ø38	M20 x 1.5	0.7	0.005
STC7.5T 2789123	108	29	Ø44	M24 x 2	1.3	0.01
STC10T 2789114	108	29	Ø44	M24 x 2	1.3	0.01
STC20T 2789117	203	50	Ø57	M36 x 3	3.3	0.02
STC30T 2789119	355	89	Ø114	M64 x 4	20	0.02
STC50T 2789121	355	89	Ø114	M64 x 4	20	0.05
STC75T 2789124	458	100	Ø130	M100 x 3	35.7	0.05
STC100T 2789113	458	100	Ø130	M100 x 3	35.7	0.1
STC150T 2789115	458	100	Ø156	M100 x 3	40.5	0.2

Rated load (tonnes)	1, 2, 3, 5, 7.5, 10, 20, 30, 50, 75, 100, 150
Proof load	150% of rated load
Ultimate breaking load	>300% of rated load
Output	1.5mV/V [±0.1%]
Accuracy	±0.1% full scale
Non-repeatability	<±0.1% of rated load
Excitation voltage	10vdc recommended, 15dvc maximum
Bridge resistance	1te: 350Ω, 20 to 50te: 700Ω, 75 to 150te: 1400Ω
Insulation resistance	>500MΩ @ 500vdc
Operating temperature range	-20°C to +70°C
Compensated temperature range	-10°C to +50°C
Zero temperature coefficient	<±0.01% of rated load/°C
Span temperature coefficient	<±0.01% of rated load/°C
Environmental protection level	IP66 [IP67 optional]
Connection type	Integrated bayonet lock connector, supplied with 5 metre mating cable assembly
Wiring connections	+supply: Red, -supply: Blue, +signal: Green, -signal: Yellow

Note: Default calibration of load cells rated up to 20 tonnes will be in tension. STCs rated 30 tonnes and above will be in compression. If you require calibration in a different mode to the standard or in both tension and compression, please state at time of order (additional charges may apply).