

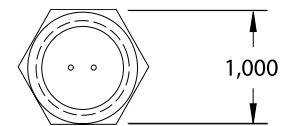
3070-XP12010

TOLERANCES UNLESS OTHERWISE SPECIFIED:
 FRACTIONS DEC. ANGLES $\pm 1/16$ $\pm .010$ ± 1 DEG.

DIMENSIONS ARE IN INCHES UNLESS OTHERWISE SPECIFIED:

Model 3070-XP12010 Specification

PARAMETER	SPECIFICATION	REF	TEST PROC.	% TEST
Output Voltage	60 VPP MIN.		See Note "A"	100
Coil Resistance	170-210 OHM@			100
Output Inductance	80 mH TYP.		Test @ 10Khz	100
Dielectric	500V RMS @ 60 Hz		See Note "B"	100
Leakage Resistance	100 MEGAOHMS MIN.		@ 500 VDC	100
Temp Spec.	- 65 to +200 Deg. F	x		



A) Tested with 8 pitch gear, 100 K Ohm LOAD, 1000 IPS, .005 GAP.

B) Apply Test Voltage at not more the 100 Volts per Second.

C) Polarity: White Lead is Positive with Respect to Black lead upon Approach of Ferrous Metal.

D) Housing Material: Stainless Steel. POTTING: EPOXY RESIN.

E) Permanent Marking: XP12010 Year/QC LOT # (E.G. 2005/xxx).

F) Marking
 SSI USA 28712
 II 2 GEEExm II T3

 03ATEX 135029X

G) Teflon Jacketed Leads.

H) Pressure Not to Exceed 3000PSI.

