

Corona Discharge Checker

MK-720 Series

ISO9001



JQA-0950

Immediate detection of insulation deterioration under hot linecondition!

Discharge detection based on frequency analysis!

MK-720 detects periodicity of corona discharge at AC power-supplied facilities unaffected by ambient noises.

Ideal for insulation deterioration on insulators, disconnectors and circuit breakers.

Receiving ultrasonic wave from corona discharge enables us to survey electrical instruments without contact.



MK-720L-E
Long-distance type
(Approx. 10m)



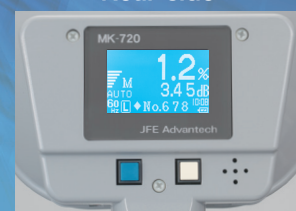
MK-720-E
Short-distance type
(Approx. 3m)



Features

- Detects insulation deterioration on insulators, disconnectors and circuit breakers!
- Precise measurement in $\pm 8^\circ$ spot
- Identifies point of corona discharge with a laser pointer
- Records measurement data (Component rate, Waveform, FFT data)
- Easily transferable recorded data to PC via USB cable
- Generates audible sound from corona discharge and transmit through an earphone

Rear side

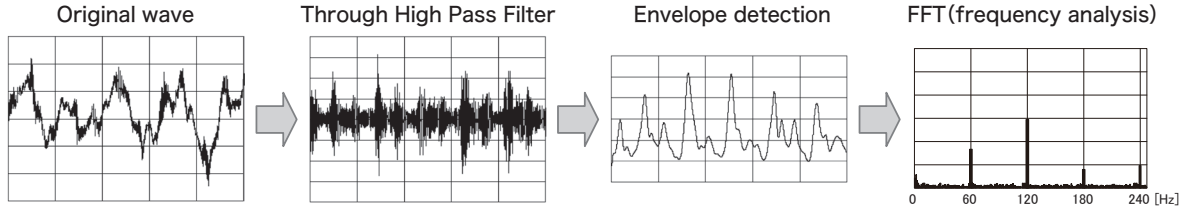


Inlaid composite image for this photo

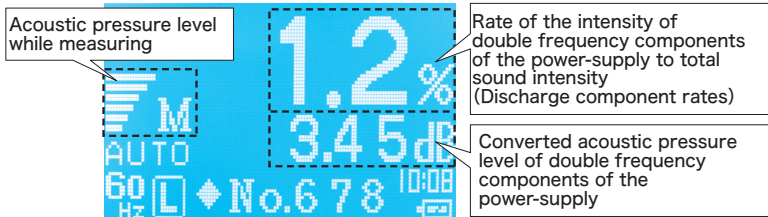
Measuring principle

Broadband ultrasound is emitted with corona discharge due to insulation deterioration at AC powered facilities. Since the intensity of the emitted ultrasound varies periodically with alternative voltage, double frequency components of power-supply appears prominently in frequency analysis after envelope detection of the received ultrasonic wave.

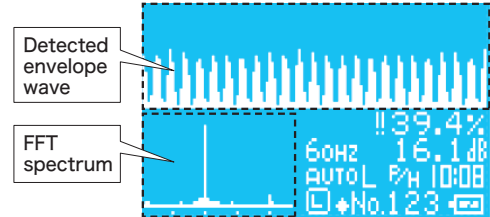
MK-720 series can detect corona discharge without effects of ambient noises by evaluating the intensity of double frequency components of the power-supply.



Measurement display



Measured data is hold and memorised.



Only MK-720L displays detected envelope wave and FFT spectrum.

Specifications

Model	MK-720L-E	MK-720-E	
Detecting frequency	Central frequency 40kHz		
Detecting directionality	±8°		
Functions	Display of discharge component rate, Display converted value in acoustic pressure Alarm based on discharge component rate, Measuring point indication with laser pointer (Laser pointer light intensity Class 2 IEC 6825-1)		
	Peak hold mode Display of measured wave and FFT spectrum		
Measurement sensitivity of Discharge component rate (Discharge measurement:equivalent 100 to 300pC)*1	20 % and more at 2 meters distance, 6% and more at 8 meter s distance	15 % and more at 1 meter distance	
Data memory	Discharge component rate, Converted value in acoustic pressure	Max. 200 values	Max. 500 values
	Received ultrasound waveform, FFT, TOP10	Max. 70 values	Max. 10 values
Output	Buzzer by setting level excess Signal output terminal (φ3.5mm mini jack) USB port for memory data output (USB mini B socket)		
Power supply	AA dry alkaline battery 4 pcs(over continuous 7 hours use)		
Dimensions·Net weight	W 174 X H 268 X D 98 Approx.370g(excluding batteries)		
Measuring ambient	0 - 40°C, 10 - 85%RH(non condensing)		
Standard configuration	Main unit, AA dry battery x 4, USB cable, Software(CD)*2, Earphone, Strap, Instruction manual, Inspection sheet		
Option	Soft case(MK-9702), Carrying case(MK-9703), Reference oscillator(MP-161)		

*1 Measurement sensitivity is based on the measuring reference oscillator(MP-161), ambient temperature 25 degrees C indoor condition.

*2 MK-720 series software requires English OS for Windows®, Windows® Vista, Windows® 7, Windows® 8, 8.1 and Excel® 2003 or later.

®Windows®, Windows® Vista, Windows® 7, Windows® 8, 8.1 and Excel® 2003 are registered trademark of Microsoft Corporation in the United States and other countries.

*All specifications data contained in this catalog are subject to change without notice.

CHECK·LINE®—PRECISION QUALITY CONTROL INSTRUMENTS

Electromatic Equipment Co., Inc.
600 Oakland Ave.
Cedarhurst, NY 11516 —USA

Tel: (800) 645-4330 (USA & Canada)
Tel: (516) 295-4300
Fax: (516) 295-4399

Email: info@checkline.com
Website: www.checkline.com

For additional information or to place an order CALL TOLL FREE 1-800-645-4330

Check·Line is a registered trademark of Electromatic Equipment Company Inc.