

Online Tension Sensor with WiFi Data Communication

Wherever measuring values cannot be transferred using cables, Check·Line offers a new, economic solution - WiFi data communication

Series WL

Typical application:

- Machines, where a tension sensor is mounted on rotating parts and the signal is transferred using slip-rings until now
- Process data acquisition in modern production process

Solution:

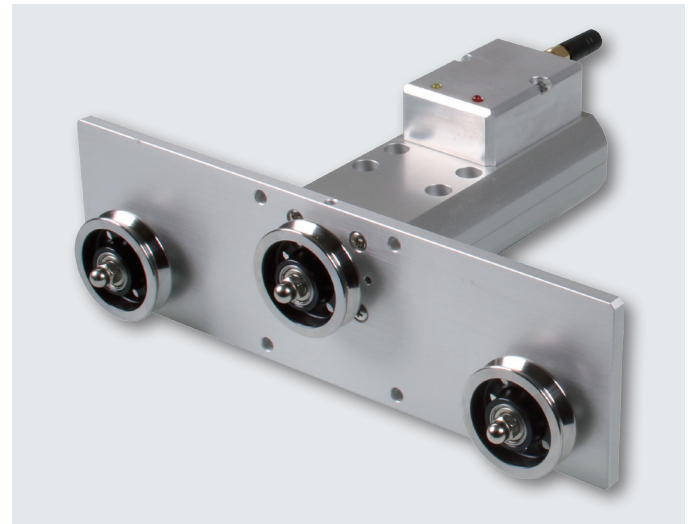
For rotating applications we equip our online series FS with a new planimetric adjustment system. Therefore gravity forces can be compensated. The integrated WiFi modul ensures wireless data communication to a control panel, display or computer.

Configurations:

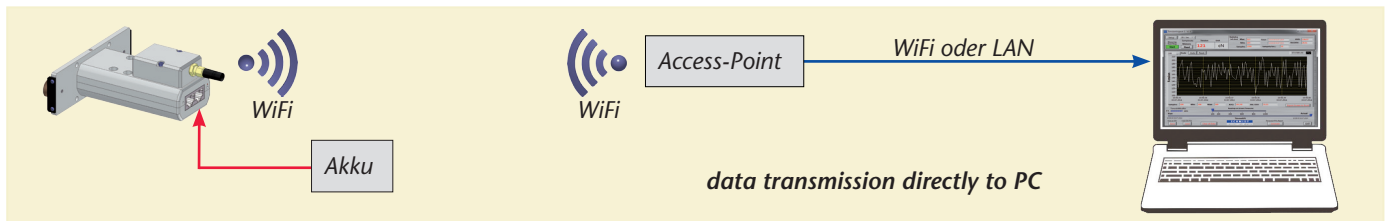
Depending on your demands, different configurations are possible.

Single-Sensor-System:

- Force sensor with WiFi communication; this is sending the data to a PC.
- Force sensor with WiFi communication; this is sending the data to a display. The display can be connected to a controller or PC (analog and digital output).



FSH-WL-5000



Multi-Channel-Sensor-System:

- Max. 16 sensors with WiFi communication; these are sending the data to a PC.
- Max. 4 sensors with WiFi communication are sending the data to display SC-PM4. This can be connected to a controller or PC (analog and digital output)

