

MESUR™gauge and MESUR™gauge Plus expand the functionality of force and torque measuring instruments and test stands. Both programs share the ability to capture and display data in graphical format for load vs. time or load vs. travel vs. time. MESUR™gauge Plus adds the ability to control the motion of Mark-10 motorized test stands, coordinating motion control and data acquisition.

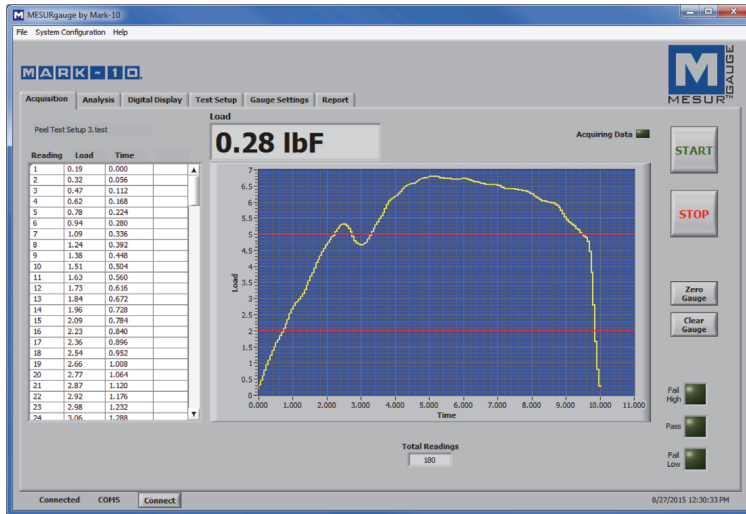


The programs include a set of tools to analyze test results, including statistical calculations, quick data export to Microsoft Excel, customizable reports, pass/fail indicators, and many others. Test setups are customizable and can be saved and recalled. The user can program test start and stop conditions, including load, time, distance, and sample break. Additional features include a large display screen for real time load and travel data and a utility to configure Mark-10 gauges from a PC.

Built-in simulated data generation allows MESUR™gauge or MESUR™gauge Plus to be evaluated without an instrument.

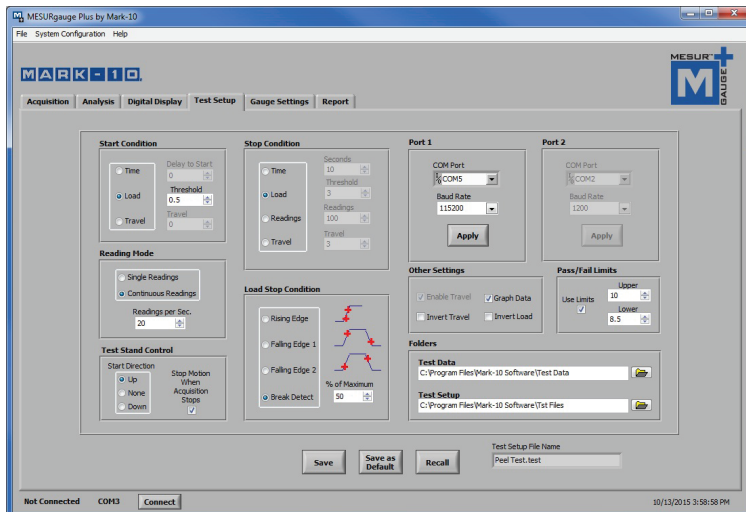
Features

- Acquire continuous or single-point data from force and torque measuring instruments and test stands.
- MESUR™gauge Plus starts and stops models ESM303, ESM303H, and ESM1500 motorized test stands, coordinating motion control and data collection with just one click.
- Real time tabular and graphical data acquisition of load vs. time or load vs. travel vs. time.
- Configurable start and stop test triggers (time, load, number of samples, or distance).
- Statistical calculations of acquired data. Automatically recalculates for custom data ranges.
- One-click export to Excel.
- Customize test setups for future recall.
- Customize reports and report templates.
- Configure Mark-10 gauges and indicators through a simple interface.
- View real time data on a large simulated instrument display.



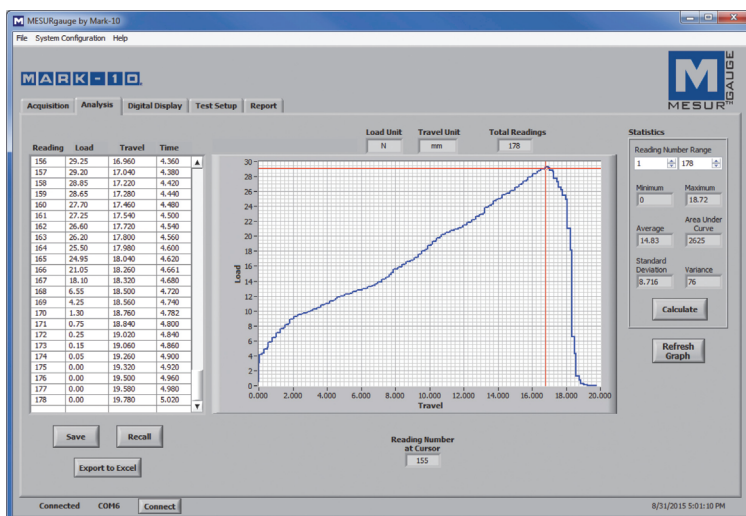
Start and stop data collection, and view real time data in graphical and tabular formats.

With MESUR™gauge Plus, the START button also initiates the motion of an ESM303, ESM303H, or ESM1500 motorized test stand*, consolidating complete test control into just one click.



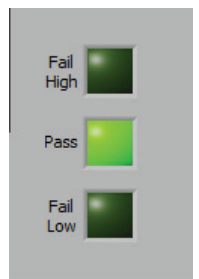
Configure test start and stop conditions.

With MESUR™gauge Plus, set the initial test stand crosshead direction upon starting the test.

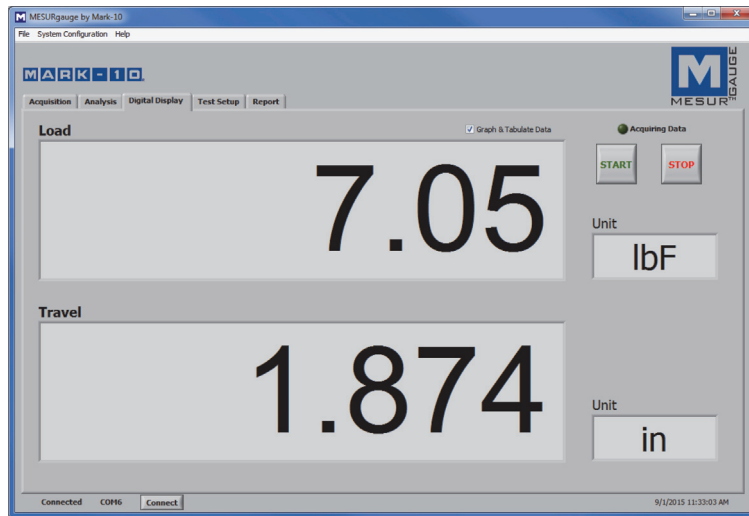


Sophisticated analysis tools include an x-y cursor, statistical calculations with automatic re-calculation for a customizable data range, export to Excel, and more.

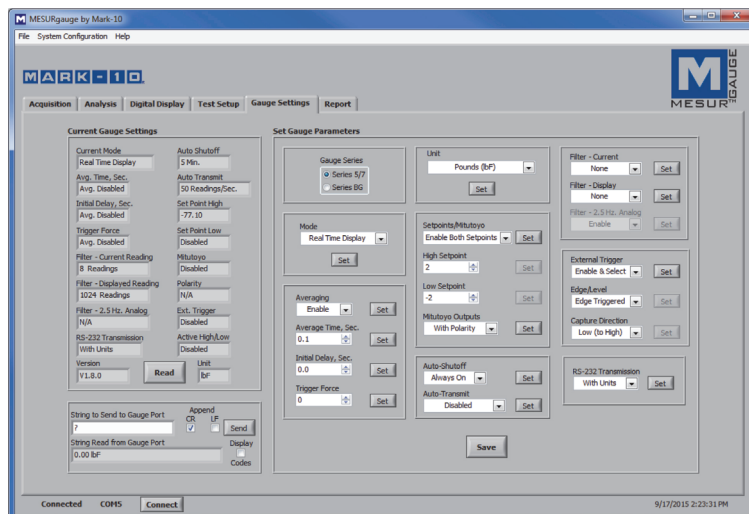
High and low limit indicators help differentiate between an acceptable sample and a reject.



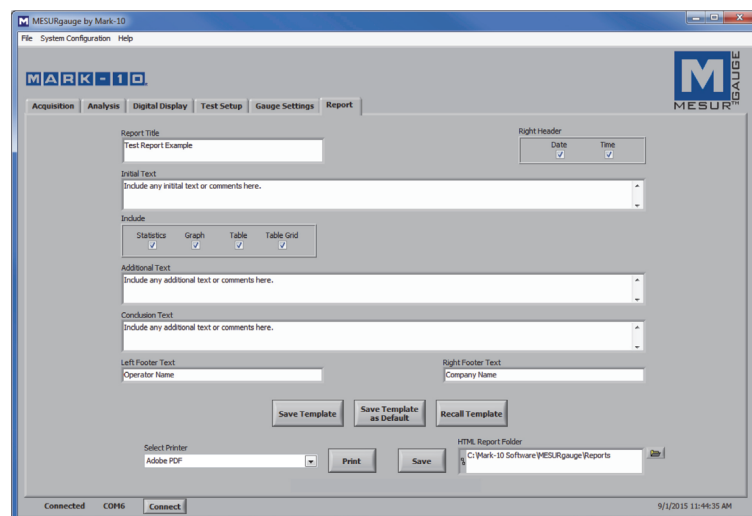
* Minimum supported firmware versions: ESM303: 2.02.04 front / 2.02.04 main. ESM1500: 2.02.02 front / 2.02.01 main. Firmware update may be done at the factory.



View real time load and travel readings on an enlarged simulated instrument display.

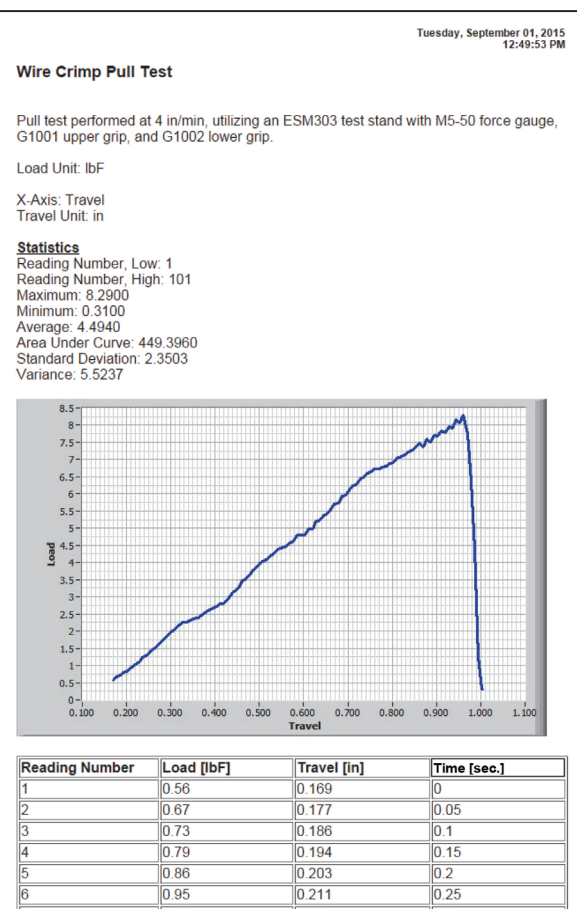


Mark-10 gauge / indicator settings can be configured through a simple interface.



Easily customize reports and report templates.

A typical report, containing customizable information fields, statistics, graph, raw data, and date and time.



Ordering Information

Part No.	Description
15-1004	MESUR™gauge software
15-1005	MESUR™gauge Plus software
15-1006	Upgrade, MESUR™gauge to MESUR™gauge Plus*

* Minimum required test stand controller firmware versions:
ESM303 / ESM303H: Front: 2.02.04, Main: 2.02.04
ESM1500: Front: 2.02.02, Main: 2.02.02

Firmware versions are displayed at power-up. Firmware update may be done at our factory at no charge. Contact Mark-10 for details.

Hardware Requirements

- Windows XP or later operating system
- Minimum display resolution of 1108 x 758
- One or more USB or RS-232 ports