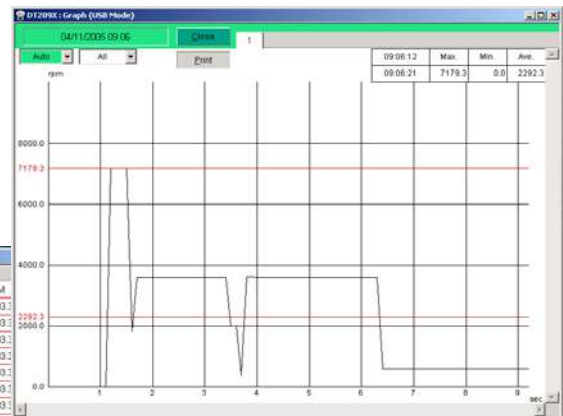
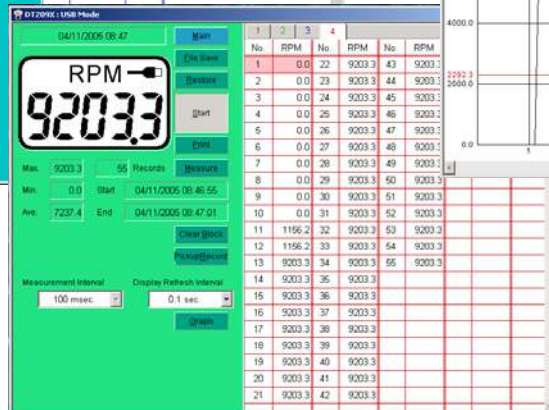
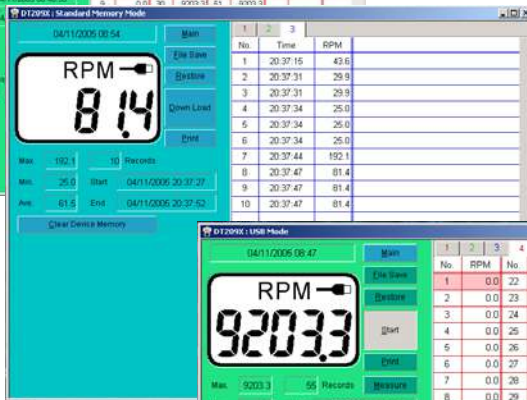
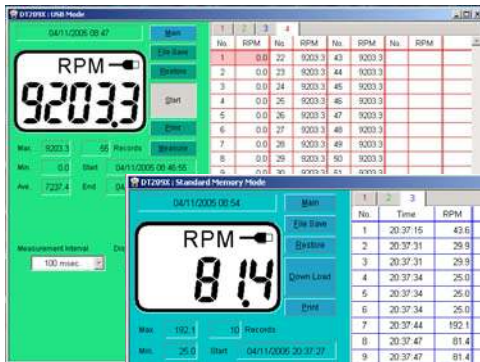
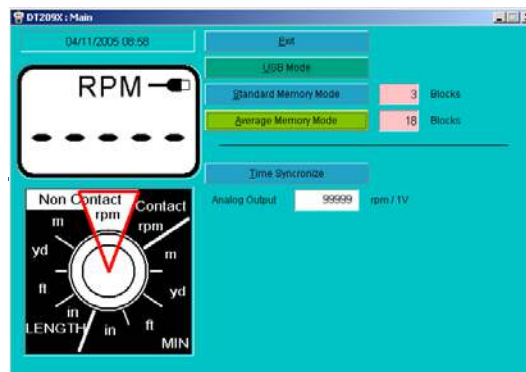


Handheld Digital Laser Tachometer

Model DT-209X* with Software Instruction Manual



***DT-209X-S12 with 12-inch circumference wheel**

Thank you for your purchase of this Tachometer Product. This manual explains how to operate your equipment safely and correctly. The manual covers the various different features of the DT-209X. Kindly read this manual thoroughly before operation as it holds important information that will help you fully utilize this unit.



Caution warning holds important safety information



Reminder: holds important key information for the product.



Warning: Laser equipped product. Observe caution

WARRANTY

LIMITED EXPRESS WARRANTY: Shimpo Instruments warrants, to the original purchaser of new products only, that this product shall be free from defects in workmanship and materials under normal use and proper maintenance for one year from the date of original purchase. This warranty shall not be effective if the product has been subject to overload, misuse, negligence, or accident, or if the product has been repaired or altered outside of Shimpo Instruments's authorized control in any respect which in Shimpo Instruments's judgment, adversely affects its condition or operation.

DISCLAIMER OF ALL OTHER WARRANTIES: The foregoing warranty constitutes the SOLE AND EXCLUSIVE WARRANTY, and Shimpo Instruments hereby disclaims all other warranties, expressed, statutory or implied, applicable to the product, including, but not limited to all implied warranties of merchantability and fitness.

LIMITATION OF REMEDY: Under this warranty, Shimpo Instruments' SOLE OBLIGATION SHALL BE TO REPAIR OR REPLACE the defective product or part, at Shimpo Instruments' option. Shimpo Instruments reserves the right to satisfy warranty obligation in full by reimbursing Buyer for all payments made to Shimpo Instruments, whereupon, title shall pass to Shimpo Instruments upon acceptance of return goods. To obtain warranty service, Purchaser must obtain Shimpo Instruments's authorization before returning the product, properly repackaged, freight pre-paid to Shimpo Instruments.

INDEMNIFICATION & LIMITATION OF DAMAGES: Buyer agrees to indemnify and hold Shimpo Instruments harmless from and against all claims and damages imposed upon or incurred arising, directly or indirectly, from Buyer's failure to perform or satisfy any of the terms described herein. In no event shall Shimpo Instruments be liable for injuries of any nature involving the product, including incidental or consequential damages to person or property, any economic loss or loss of use.

MERGER CLAUSE: Any statements made by the Seller's representative do not constitute warranties except to the extent that they also appear in writing. This writing constitutes the entire and final expression of the parties' agreement.

DT-209X Handheld Digital Laser Tachometer

Table of Contents

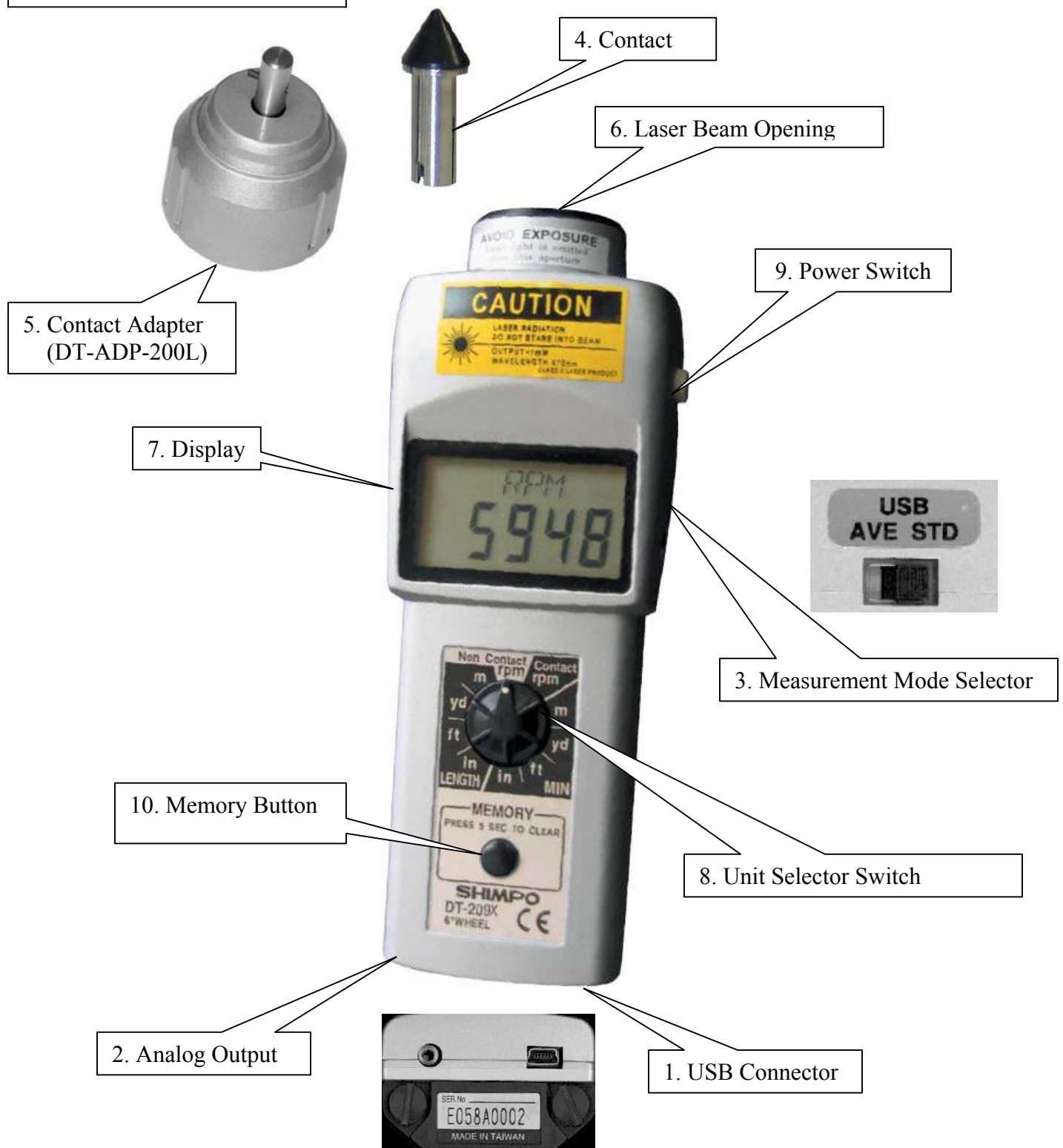
Section I – Handheld Tachometer

• Description of Parts.....	1
• Description LCD Display.....	3
• Unit Selector Switch.....	4
• Abbreviation of Display Table.....	5
• Power Supply.....	6
• Measurement Modes.....	7
• Flow Chart Diagram.....	8
○ Standard Mode	
○ Average Mode	
○ USB Mode	
• Measuring Methods	10
• Mode Operation.....	13
○ Display Explanation	
• Memory Function.....	17
• Other Function.....	20
○ Memory Deletion	
• Analog Output	21
• Replacing Batteries.....	22
• Specifications.....	23
• Accessories.....	24


Section II – Software.....27

• DT-209X API Section	
○ Software Compatibility	
○ Advantages of USB	
○ Different Modes	
• DT-209X API-CD Checklist.....	28
• DT-209X USB Driver Installation.....	29
• Application Software Installation.....	30
• Main Screen Description	36
• LCD Display.....	39
• Unit Selector Switch.....	40
• USB Mode Screen.....	41
• USB Mode Graph Screen.....	51
• Standard Mode Screen.....	53
• Average Mode Screen.....	57
• Display Hold.....	62
• Troubleshooting Section	63

DT-209X Parts Description

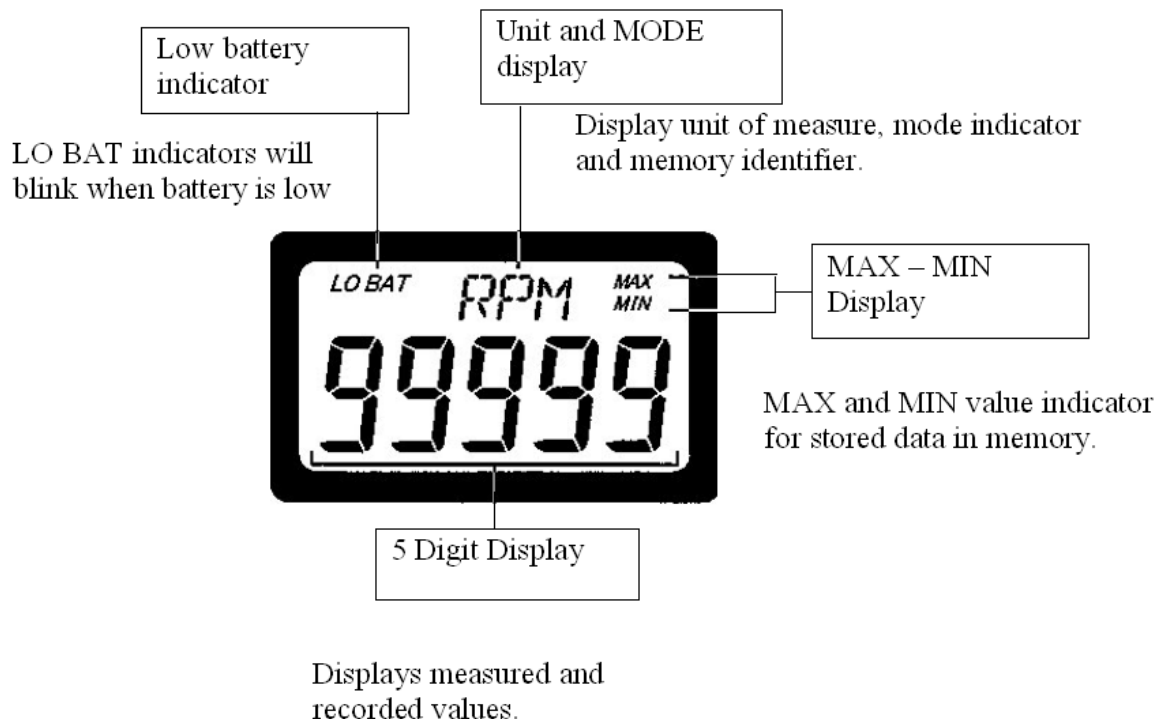


Model DT-209X casing is similar to standard DT-207/DT-205L with addition of USB port, analog output, and selector switch.

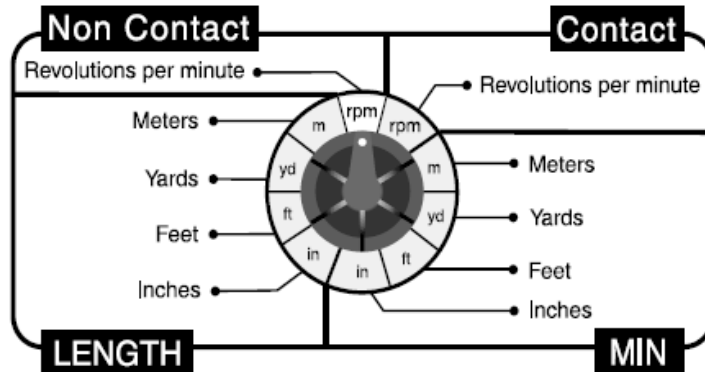
Parts		Function							
1	USB Connector	Mini-USB connector for PC online measurements and data downloads.							
2	Analog Output Connector	0 to 1-volt analog output connector for pen recorders and other external devices.							
3	Measurement Mode Selector Switch	Slide selector switch for different measuring modes. (USB, Average, STD).							
4	Contact Accessories	Contact attachments for contact measurements. Types of attachments: Funnel, Cone, and FPM wheel (length measurements).							
5	Contact Adapter	Threaded adapter for contact measurements. It can be installed easily on top of the laser opening. (DT-ADP-200L).							
6	Laser Beam Opening	<p>Output opening for laser diode. (Laser beam Max output: 1 mW. Continuous Wavelength: 670nm). For Non-contact operation the reflective tape is placed on the rotating object. When the reflective tape passes the laser a count is generated. Effective distance from object to be measured can be from 127 mm to 1.5m (5 inches to 59 inches). *Measuring Conditions: On reflective surfaces, it may be necessary to paint the shaft black, to minimize false activation of the sensor. Reflective tape size and the radius of the moving object should be considered to get the most accurate reading from the tachometer.</p>  <p>Warning: Do not look into the laser beam opening while in operation. Staring at the laser beam directly can cause eye damage.</p>							
7	Display	LCD main display 5digits/ Custom Words and Units.							
8	Unit Selector Switch	<p>Units of measure are selected from this switch. Proper contact tip accessory should be used for operation.</p> <table> <tr> <td rowspan="3">Contact</td><td>Rotation Speed Measurement</td><td>RPM</td></tr> <tr> <td>Linear Speed Measurement</td><td>M/min-yd/min-ft/min-in/min</td></tr> <tr> <td>Length Measurement (wheel required)</td><td>in /ft/yd/ m</td></tr> </table>	Contact	Rotation Speed Measurement	RPM	Linear Speed Measurement	M/min-yd/min-ft/min-in/min	Length Measurement (wheel required)	in /ft/yd/ m
Contact	Rotation Speed Measurement	RPM							
	Linear Speed Measurement	M/min-yd/min-ft/min-in/min							
	Length Measurement (wheel required)	in /ft/yd/ m							

		Non-Contact	Rotation Speed Measurement	RPM
9	Power Switch	Non- USB Mode (No cable connected)	ON and OFF switch and block separator. For standard and average mode the power switch button is required while taking readings. Failure to press the power button will not permit measurements. Pressing the memory button while holding the power button, allows sample points to be captured. Releasing the power button advances the memory per block. If the tachometer is idle for 5 minutes, the auto power off feature will turn on to conserve battery use.	
		USB Mode	In USB mode this switch is inactive. The DT-209x is in the ON state while USB cable is connected. Voltage is supplied from the host computer.	
10	Memory Button	Non -USB Mode	Use to store data readings to DT-209X on board memory. Recalls stored data from the tachometer	
		USB Mode	Switch is inactive when the tachometer is connected to the PC via USB port.	

Description LCD Display




Unit Selector Switch



Multi-mode capability measures RPM, mPM, YPM, FPM, IPM and **total** meters, yards, feet and inches.

NOTE: Selector switch not available in USB mode; all controls are transferred to the software through the USB cable.

Measurement method	Explanation of Operation	
Contact Type	Contact measurement requires the contact adapter (DT-ADP-200L) and the proper attachments. NOTE: Make sure that proper position of the knob is selected. For length and linear rate measurements wheel is required to get right ratio. (FPM-6, FPM-12).	
	For rotational speed measurements	RPM (rev/MIN) –Cone tip, Funnel tip
	For speed measurements	m/MIN - yd/MIN - ft/MIN - in/MIN (6" or 12" circumference wheel).
	For length measurements	in / ft / yd / m (6" or 12" circumference wheel)
Non-Contact Type 	Non-contact measurement requires the use of the laser and a reflective tape. Choose the correct settings with the Unit Selector Switch. CAUTION: Laser Beam Radiation. Do not stare into beam.	
	rotational speed measurement	RPM (rev/MIN)

Operation

- The switch selector can be turned clockwise or counter-clockwise depending on which unit of measure is required.
- The unit of measure selected on the dial is indicated in the digital display.
- Conversion of units –measured values can be automatically converted to the unit selector switch.
Limitation: Conversion is limited to the same group of values (example RPM cannot be converted to inches).
- Dashes will show on the display when invalid selection is made.

Abbreviation Display Table

Setting	Display	Meaning
Unit	RPM	RPM-Revolutions per minute
	m/M	Meters per minute
	Y/M	Yards per minute
	f/m	Feet per minute
	I/M	Inches per minute
	IN	Inches
	fT	Feet
	YR	Yards
	m	Meters
Mode	Usb	USB mode
	STd	Standard mode
	AVE	Average mode or average data display
	LST	Last measurement recorded
	M1~M10	Memory number in Standard Mode
	NOO~N30	Block number (Average:30 memory blocks max, Standard: 24 memory blocks max)

Additional Displays

Setting	Display	Meaning
Measurement	5 figure digits	Depending on which mode is selected, and the range of measurements the decimal point may not be available. For better resolution use USB mode and DT-209X software.
State	LoAd	Storing data reading
	rEAdy	Tachometer ready to accept readings

	FULL	Full memory indicator (the unit cannot store additional data)
	CCCCC	Clear data from memory. Holding memory button for 5 seconds will clear stored data per block in Standard and Average modes. For USB operation, CCCCC indicates deletion of all stored data in the selected measurement mode.

Power Supply

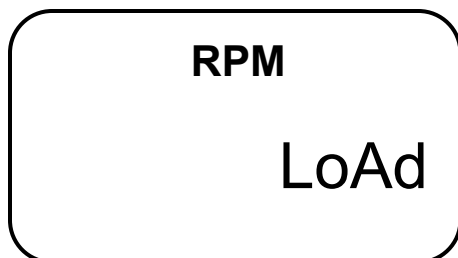
Each tachometer requires 2 AA batteries to operate. Smart switching feature of the tachometer is active when USB cable is connected. Each tachometer can be bus powered from the USB cable.

Note: Without the batteries the tachometer can work powered by the host computer.

How does measurement starts?

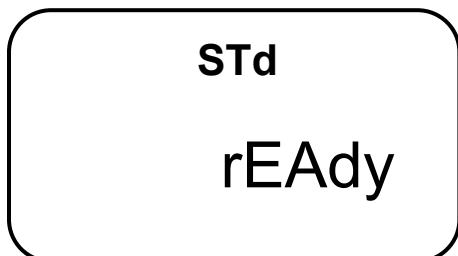
- In USB Mode measurements starts after the start button in the software is activated (See API section of this manual).
- In Average and Standard Modes, the tachometer starts to record data after the power button is pressed.

When the DT-209X tachometer is turned on the following displays are shown.



Load message from the LCD indicates program is initializing. Preparing previously stored data before it went to auto shut off

This is then followed by

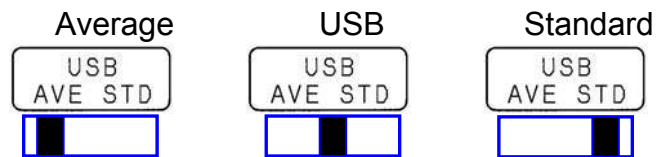


When rEAdy message is shown on the display, it indicates initialization of the program is complete.

NOTE: In USB mode recorded data is downloaded directly to the computer. Auto power off feature of the tachometer is disabled; the supply of power for the unit is coming from the host computer.

Measurement Mode

The Measurement Mode is changed with the Measurement Mode Selector switch. There are three basic settings USB, Standard and Average. The switch is located on the side of the tachometer (See Description of Parts Section).



Measurement mode	Explanation
USB Mode	<p>Features:</p> <ul style="list-style-type: none"> • DT-209X takes online measurements via USB cable. • Downloads data from Standard and Average Mode. <p>Please refer to the API manual for additional information.</p>
Standard mode	<ul style="list-style-type: none"> • DT-209X takes measurements while the power button is pressed. • There are 24 memory blocks that can be stored; each block contains 10 data points. To store data in memory, the power button is held and the memory button is pressed once. This routine is repeated for every measurement that needs to be captured. After all the 10 data points are used a "FULL" indicator is displayed on the LCD screen. Arbitrarily less than 10 data points can be stored in memory. • Moving from one data block to the next requires the release of the power button. When recording is resumed the display will show "n" followed by a number indicating the existing memory block location, where data will be stored. • Holding the memory button for 5 seconds clears the stored memory per block. • If the memory button is not pressed while the power button is activated, the data will not be stored for that period of time.

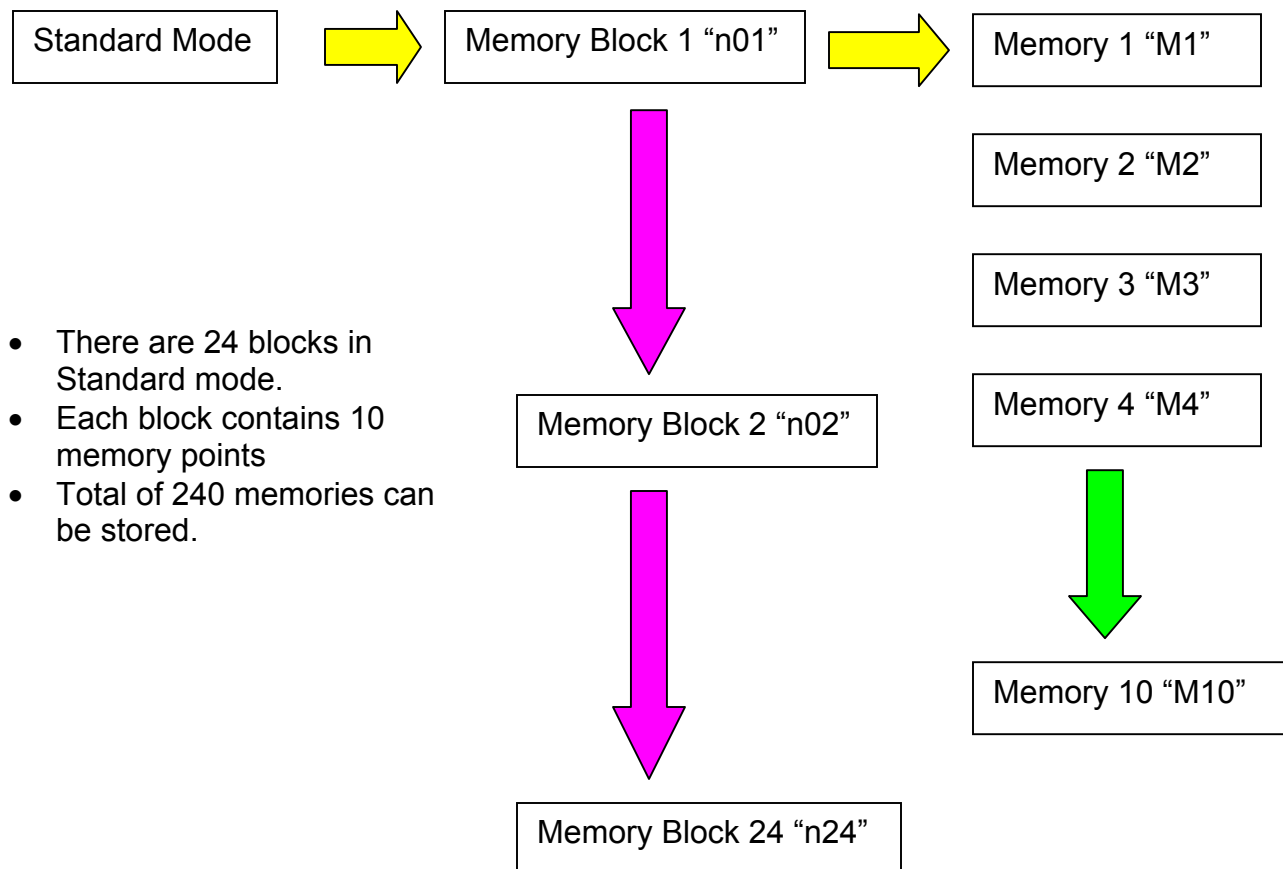
Average mode	<ul style="list-style-type: none"> • The max, min, average, last and time of measurement can be stored in memory via power button. • The unit can store a maximum of 30 blocks • Each block of data is based from the time the power button was first pressed and then released. Within that time average values are calculated and stored in memory together with the time of measurement. • Only the final set of values are displayed from the tachometer in this mode. To review other blocks of memory, the DT-209X has to download data using the software and a computer.
--------------	--

Flowchart Diagram

Standard Mode

Pressing the Power button

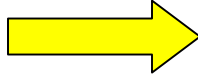
Pressing the Memory button



Average Mode

Press and release the Power button

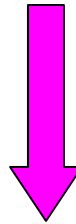
Average Mode



Memory Block 1 "n01"

Memory Block 2 "n02"

Memory Block 3 "n03"



Memory Block 30 "n30"

Average values are calculated based from the activation of the power button. (Only average values are available).

NOTE: In both Standard and Average Mode, the memory button is pressed to recall memory. It can only give information on the last memory block stored. To examine other memory blocks the data should be downloaded using the USB Mode and DT-209X Software.

USB Mode

Online measurements, software controlled programs can run and take measurements while the host computer is active. The host computer provides power in this mode conserving battery life.

(Additional information is provided in the API section.)

Measuring Methods

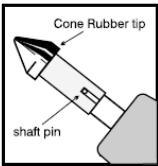
Rotational speed measurement (Contact RPM)

Example: RPM measurement using the cone tip for motor rotation.



The contact adapter (DT-ADP-200L) is attached to the tachometer laser opening.

There are threads on the adapter assembly for easy installation.



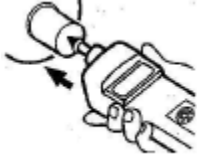
Install the contact adapter securely until all the threads are used. To prevent damage do not over tighten.

Use the cone tip adapter to read shaft measurements. Slide the tip on the shaft of the tachometer. Make sure that the notch and the pin from the tachometer shaft is aligned to prevent slippage.



The Unit Selector Switch is turned to contact RPM.

For additional information on other settings check the Unit Selector Switch section of this manual (Refer to page 4).



In USB Mode the Unit Selector Switch is not available. All the controls are transferred to the host computer.

The cone adapter is slowly pressed to the rotating shaft. Make sure that the line of contact is straight. (Most motors provide a pilot hole on their shaft).



Power Button

The power switch is pressed while taking readings. Releasing the power button will stop measurements and activate the 5-minute auto power off feature. (Not applicable in USB Mode.)

When the display continues to show "0.00" no measurements are being taken. If this happens check the power button if it is pressed firmly or if the contact tip is making good contact with the rotating shaft.

Measured data is displayed every 1 second. (Using the software the update time can be adjusted as fast as 0.5 second.)



Three decimal points will flash on the center of the display when the tachometer is out of range.

Speed and Length Measurements

Example: Length measurement for amount of materials used.

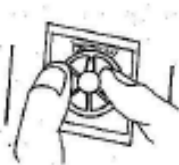


The contact adapter (DT-ADP-200L) is installed on the laser opening. There are threads on the adapter for easy installation.



Install the contact adapter securely until all the threads are used. To prevent damage do not over tighten.

Length measurement is performed using the 6-inch circumference wheel (Standard units, FPM-6) or the 12-inch circumference wheel (DT-209X-S12, FPM-12)



When attaching the wheel adapter, make sure that the pin from the tachometer shaft is aligned with the notch on the wheel.

Using the Unit Selector Switch set the knob to the suitable unit of measure needed for the application.



For additional information refer to the Unit Selector Switch section of this manual. (Refer to page 4.)



The Unit Selector Switch is inactive when connected to a computer via USB cable. All changes and controls are transferred to the software.

After the unit is selected the wheel is slowly applied to the belt to be measured.

Measurement begins after the power switch is pressed. When the power switch is released the measurement stops and the 5-minute auto power off feature of the tachometer is activated.

If display continuously shows “0.00” no measurement is taken, check the power switch if it is pressed firmly.

Typical measurement update is 1 second. (Using the software the update time can be adjusted as fast as 0.5 second).

Things to Remember



The rubber portion of the tip accessories (cone tip, funnel tip, FPM wheel) may become hot and may wear out prematurely at high speeds.

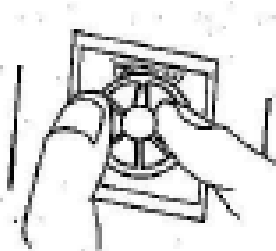


Press the tachometer firmly on the moving material when using the wheel. Do not go beyond 300mm /min.

Non-Contact Measurements

Example: Measuring the RPM of a motor shaft.

Using a piece of reflective tape to measure the rotation of the motor shaft.



- Do not use this method for shafts smaller than the reflective tape. The tape should be at least the same size as the laser beam.
- Do not use this method for shafts that are shiny. This may trigger the tachometer to have false readings.
- Remove water and oil from the shaft prior to attaching the reflective tape.
- The unit selector switch is turned to Non-contact RPM.




The Unit Selector Switch becomes inactive when the USB cable is attached from a computer.



The laser beam opening is pointed towards the position of the reflective tape.

Effective distance is 50mm -1.5m (2 inches - 14 ft) from the laser beam outlet.

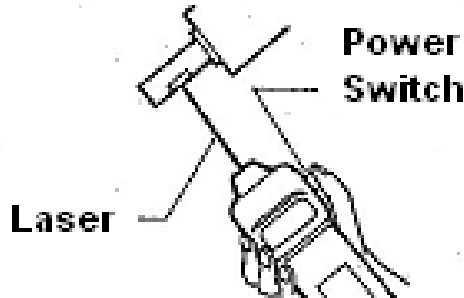


 **CAUTION: Do not look into the laser beam opening while in operation. Staring into the laser beam can result to eye damage.**

The power switch is pressed while taking readings. The Mode Selection Switch is set to either Average or Standard Mode.

The display will show “ 0 “ when measurements stop.

Measured data is displayed every second (On slower readings less than 60 RPM the display will update approximately every 1- 10 seconds).



Three decimal points at the center of the LCD display will flash when the range of the measurement is exceeded.



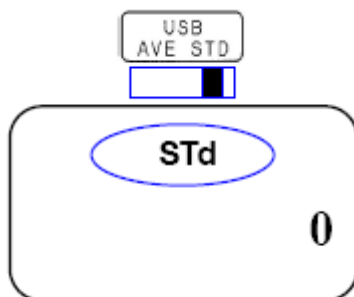
The Power Switch becomes inactive when the USB cable is connected to a host computer. The selection and control is transferred to the host computer.



Do not look into the laser beam opening while in operation.

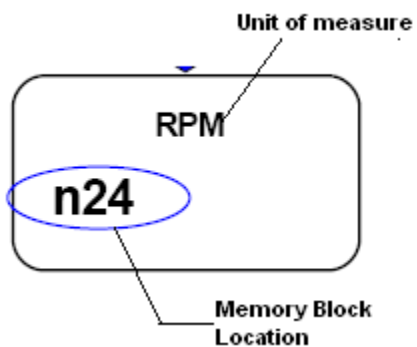
Mode Operation

1. Standard Mode



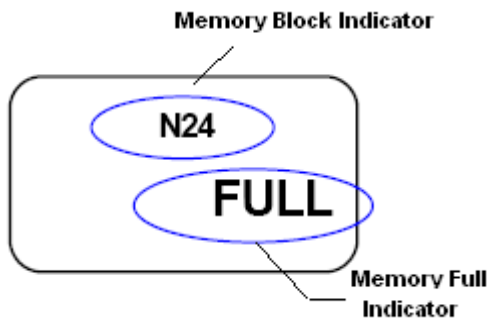
The Measurement Mode Selector Switch is set to STD (standard mode).

Standard Mode is displayed.



Pressing the Power Switch it will show the memory block number where readings will be stored.

The block number will flash for a few seconds. (Memory block location is identified by "n" followed by the block number on the LCD display).



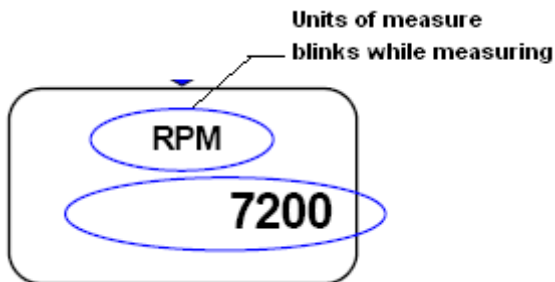
Standard mode allows 24 blocks; each block can store 10 readings.

Note:

It is not required to use all the memory blocks; it depends on the application and the usage of this tachometer.

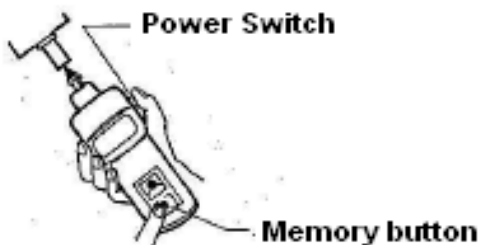


The Memory Block Indicator will change to Units of Measure depending if the readings are taken within a certain block.



Unit of Measurement is displayed on the LCD screen. The upper display indicator will flash while taking measurements.

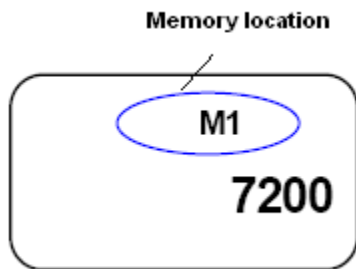
The display updates every 1 second.



Push the memory button once while holding the Power Switch to store data in memory.



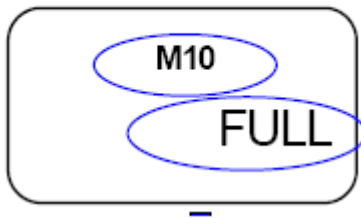
Caution: Do not hold the memory button continuously (5 seconds); this will erase stored readings per block.



The memory location where the measurement will be stored is shown on the Unit and Measurement section of the LCD display. (**“M” followed by the number indicates memory location inside the current block**).

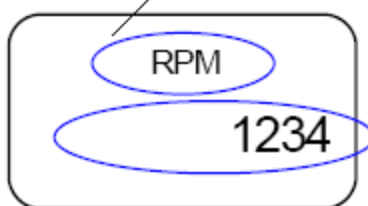
The memory number will advance automatically as the memory button is pressed each time.

Maximum 10 data per block



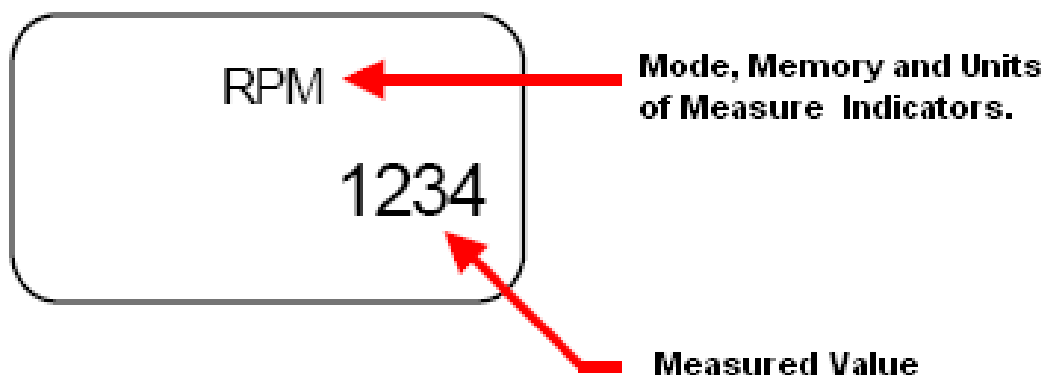
The tachometer will stop advancing once 10 memory values are stored (10 memory values per block). To store additional readings the Power Switch is released then pressed again until the number behind “M” changes. It will show a FULL indicator on the LCD display once 10 readings are stored.

Blinks while taking readings

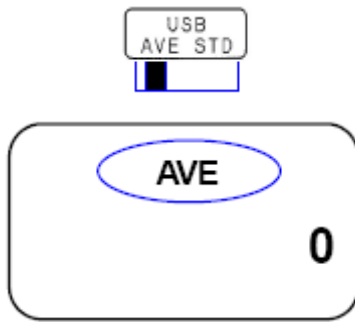


When the memory, mode and units of measure display indicator is not flashing, the tachometer stops taking readings. Make sure that the Measurement Power button is pressed while measuring.

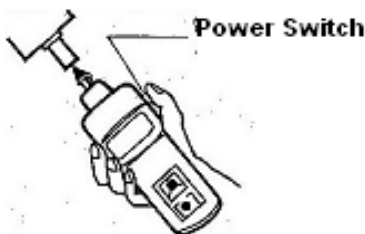
Display Explanation



2. Average Mode

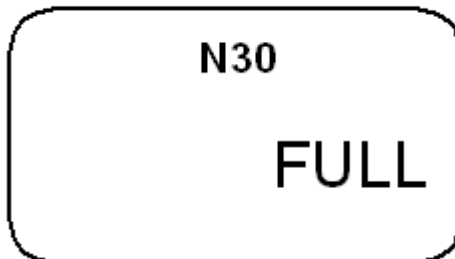


Average mode is displayed on the LCD screen



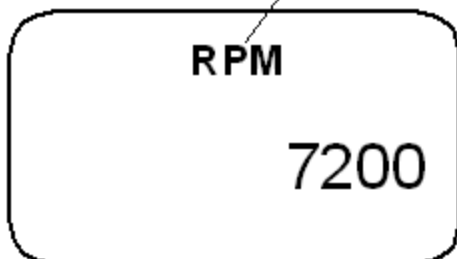
Pushing the Power Switch will show the memory block number where readings are to be stored. The block number will flash for a few seconds. Average mode allows 30 blocks total, each block is dependent on the time the power switch is first pressed and then released.

Maximum Block is reached



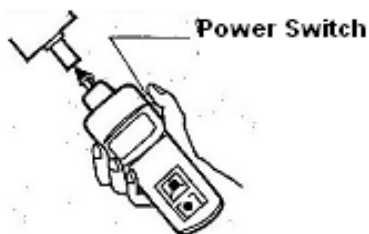
It is not required to use all the 30 memory blocks to avail of this mode. It is dependent on the usage of the tachometer. When N30 is displayed on the screen, the unit has reached the maximum allowed memory block number. When the "FULL" indicator is displayed on the LCD screen, no additional readings will be stored.

Unit of measure blinks while taking readings



Unit of Measure Indicator (RPM) will flash continuously while taking measurements. Once the Unit of Measure stops flashing, the tachometer will stop updating and no additional measurements will be read. Pressing the Power Switch will advance the memory block location and resume measurements.

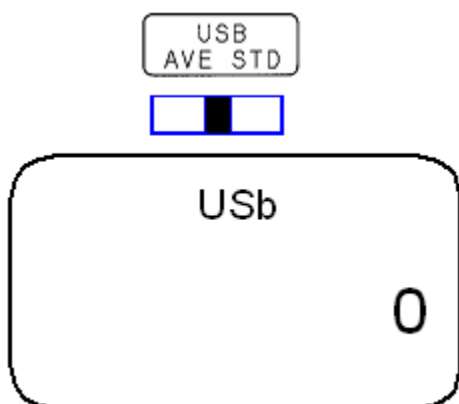
The display updates every 1 second.



Releasing the Power Switch will trigger the auto shut off feature to activate.

3. USB Mode

The Measurement Mode Selector Switch is set to USB mode (USB mode).



The USB mode is displayed on the LCD screen.

Please refer to the DT-209X API Section of this manual under USB Mode for additional information.



The Power switch and Unit Selector Switch becomes inactive from the DT-209X. All controls are transferred to the host PC.

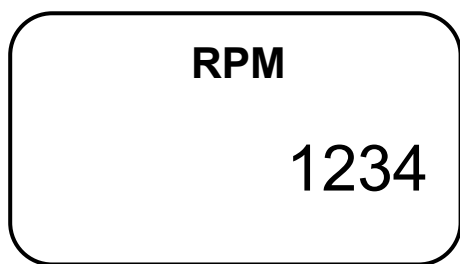


The auto power off feature will not work in USB mode. Power for DT-209X is switched from battery to USB.

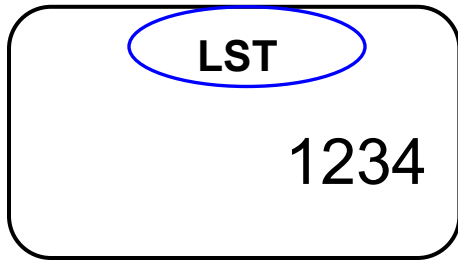
Memory Function

The DT-209X can store measured data on the tachometer. Memory recall after the auto power off is activated is possible.

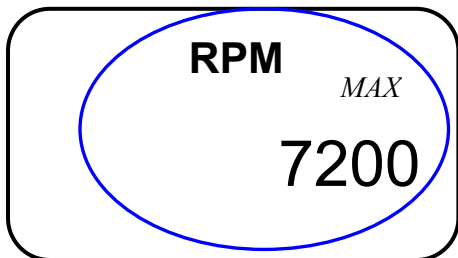
1. Standard mode



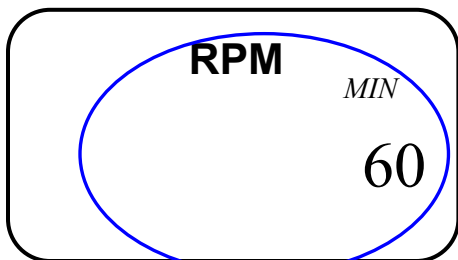
The figure on the left indicates that the tachometer stops measuring. The unit of measure stops flashing when the power button is released.



To recall memory from the DT-209X, the memory button is pressed and then released.
The last measured value is displayed.



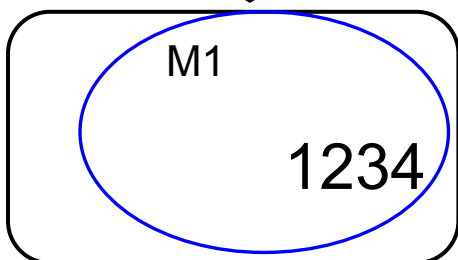
The Memory Button is pressed, and then released.
The maximum measured value is displayed.



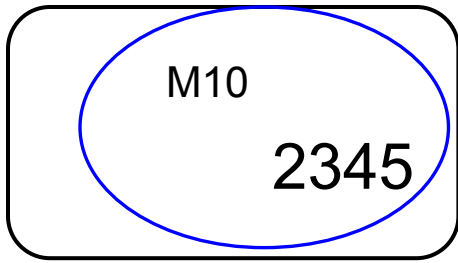
The Memory Button is pressed and then released.
The minimum measured value is displayed.



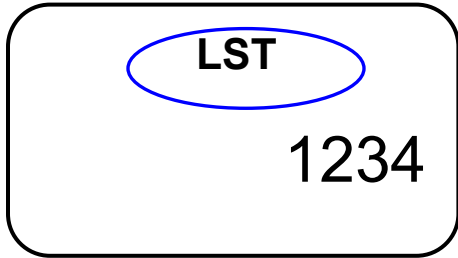
The Memory Button is pressed and then released.
The Average measured value is displayed.



The Memory Button is pressed and then released.
The first stored data is displayed.

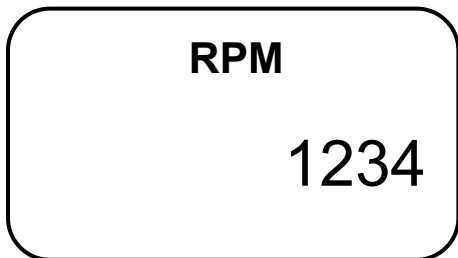


The stored data in the tachometer can be recalled each time the memory button is pressed (M1→M2 etc.). (This is only applicable to the last Memory block used and in Standard Mode).

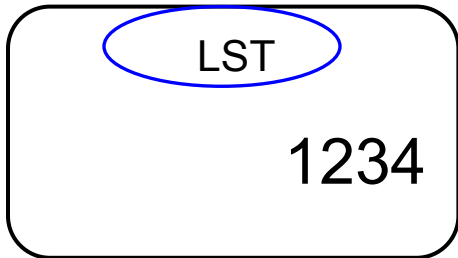


Pressing the Memory Button after M10 will cycle back the process to M1. Only the last memory block is accessible for review. To review all the blocks stored, it is necessary to download the stored data using the USB cable and software.

2. Average Mode



When the Power Button is released the DT-209X stops measuring.

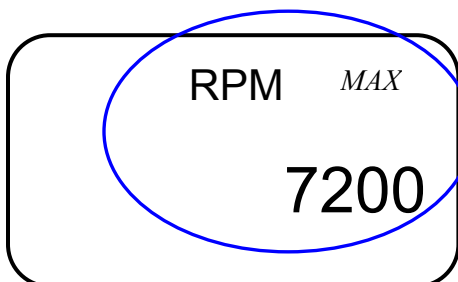


The Memory Button is pressed.

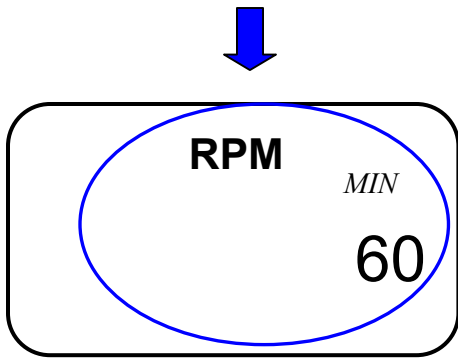


The last measured value is displayed.

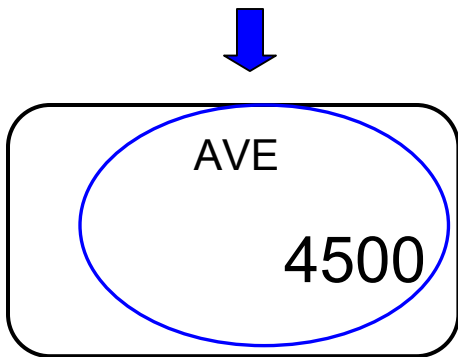
Data for calculations are not accessible. Only the average value can be recalled, together with the LAST, MAX, and MIN readings.



The Memory Button is pressed and then released. The maximum measured value is displayed.



The Memory Button is pressed and then released.
The minimum measured value is displayed.

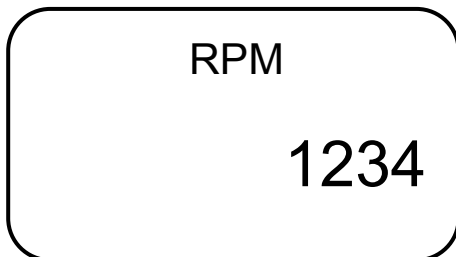


The memory button is pressed and then released.
The calculated average value is displayed.

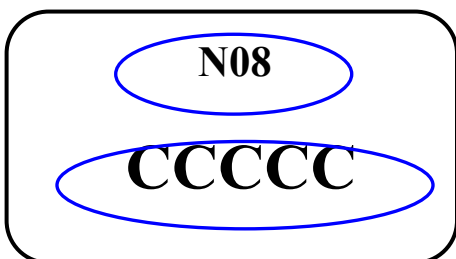
Pressing the memory button cycles back to LST. Note: Only the last Memory block is accessible for review. To review all blocks download data to the DT-209X software

Other Functions

Memory deletion



Pushing the Memory Button for 5 seconds or more clears the last memory block stored in the tachometer.

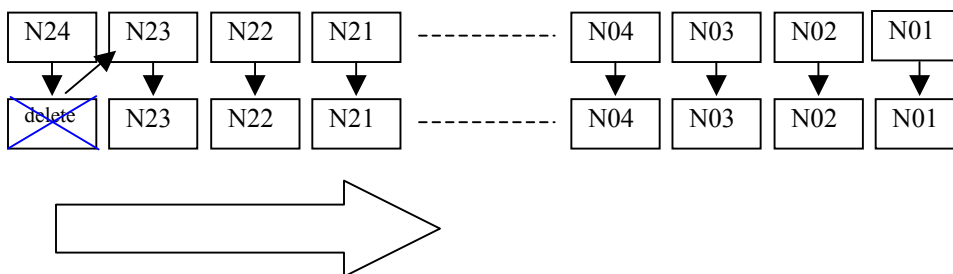


The LCD display will show “CCCCC” indicating that one block of memory has been deleted.



Clearing all the stored memory blocks requires manual deletion from the tachometer. (Example: To clear 23 blocks of memory requires erasing the memory 23 times.)

Memory deletion: The tachometer deletes the last memory block used and shifts down one block at a time, starting from the last going down to the first block stored.



From the software all the 23 data blocks can be erased all at once by selecting “Clear Device Memory”.

Analog output function

This tachometer has an analog 0 – 1V output that can be utilize for chart recorders and data acquisition cards.



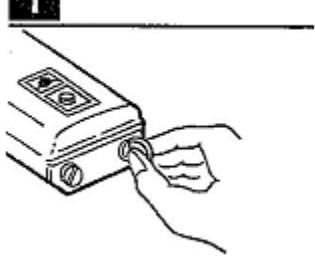
At full range the output delivers an analog 1–volt signal.

Maximum Values Allowed

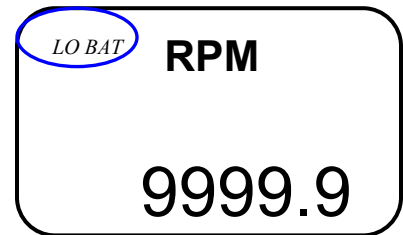
Unit	Full range	Unit	Full range
Non contact RPM	99,999	Contact RPM	25,000
m/min	3810.0	yd/min	4617.0
ft/min	12,500	in/min	99,999
in	99,999	ft	99,999
Yd	99,999	m	99,999

Replacing batteries

1 Open the battery cover

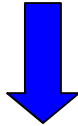


LO BAT flashes on the LCD display. This indicates that battery needs replacement. For better performance use new Batteries.

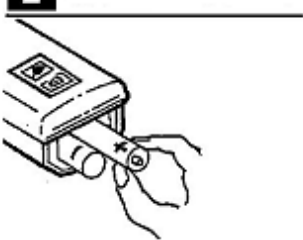


Open battery cover located on the bottom of the tachometer.

Insert 2 new batteries; a sticker can be viewed from the case indicating proper polarity.



2 Insert new batteries



Do not mix old and new batteries; this may cause leakage on the battery compartment.

Do not expose battery compartment to liquids, this may cause a short inside the terminals damaging your tachometer.

Prior to storage the battery inside the tachometer should be taken out and placed on the carrying case.

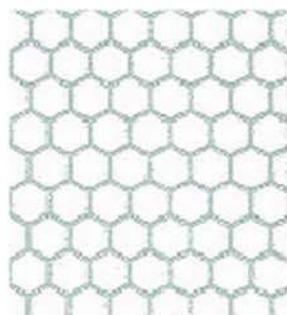
Specifications

Specifications			Content	
Model			DT-209X (6-inch cir wheel), DT-209X-S12 (12-inch cir wheel)	
Measurement mode	Standard mode		Measurement with memory switch	
	Average mode		Mean value measurement for measurement period	
	USB Mode		Measurement by computer	
Measurement method	Contact		The contact adapter and headers are used on the rotating body.	
	Non contact		The laser beam is directed towards the reflective tape. Reflection from the reflective tape is used fore measurement. Measurement distance 50mm -1.5m	
Indicator			5DigitLCD Character amount 12mm	
Rotational speed	Contact	RPM	0.8 - 25,000	
	Non contact	RPM	6.0 - 99,999	
Speed	Contact	m/min	0.11 - 3,810.0	
		yd/min	0.13 - 4,167.0	
		ft/min	0.4 - 9,999.9	
		in/min	5 - 99,999	
		Length	In	1.0 - 99,999
Length	Contact	ft	0.1 - 99,999	
		yd	0.02 - 99,999	
		m	0.02 - 99,999	
Measurement accuracy	Contact	0.8 - 9999.9rpm	±1rpm	
		10,000 - 25,000rpm	±0.006% of display value±1rpm	
	Non contact	6 - 8300rpm	±1rpm	
		8301 - 25,000rpm	±2rpm	
		25,001 - 99,999rpm	0.006% of display value ±1rpm	
Measurement time			Approximately 1 second	
Memory function	Standard Mode		24Blocks	Ten measurement points per blocks, in addition (LAST, MAX, MIN, MEAN values, and measurement date ^{□2}
	Average Mode		30Blocks	Final value, maximum value, minimum value, mean value, and measurement date ^{□2}
USB Communication			USB1.1	
Analog output function			0 to+1V Full Range	
Auto power off feature			5 minutes (This feature is turned off when measurement selector switch is set to USB and USB cable is connected to a PC.).	
Power supply	No USB Cable Connected		Two 1.5V AA batteries	
	USB Cable Connected		Power supplied through USB cable, switch from battery to USB at this mode.	
Case material			Aluminum die cast	
Externals size			Length203×Wide63×Thickness 46mm USB excluded. Cable.	
Mass			400g (Batteries included.)	
Ambient temperature of use			0 – 45 C (Moderate humidity)	
Ambient temperature of use				
Accessory	Standard		2 cone adapters, 1 funnel adapter, 1 3-1/2” extension shaft, USB cable (Length: 36 inches), carrying case, 1 master wheel (6-inch circumference wheel), software CD-R1, reflective tape, 2 AA alkaline batteries,	
	Option		Analog output cable	



It is not possible to read date and time through the handheld tachometer. Data should be downloaded to a PC to view the date and time of the test.

Hand Held Tach Accessories



Reflective Tape - 1" x 7 3/4"
Tape Strip



Reflective Tab - 1/2" x 1/2"
35 tabs per sheet.
Tab



Extension Shaft - 3 1/2"
For all DT Series handheld tachometers.
Ext - Shaft



DT-ADP-200L
Contact adapters for
DT-205L and DT-207L
Laser tachometers.

Measuring Wheels:

For contact linear rate and length measurement

FPM-6 (feet/min) (6" cir.)

FPM-12 (feet/min) 12" cir.)

YPM (yards/min) (0.1 yard
circumference)

MPM (meter/min) (0.1 meter
circumference)

FPM-6-GV (6" cir. grooved wheel)

FPM-12CBL (12" cir. wheel for
cables/elevator cables)

FPM-RE1B (12" cir. for use w/ rotary
pulse generators)

FPM-12CBL-RE1B (12" cir. for use w/
rotary pulse generators)



DT-CARRY100
Plastic carrying case for all DT series
handheld tachometers.

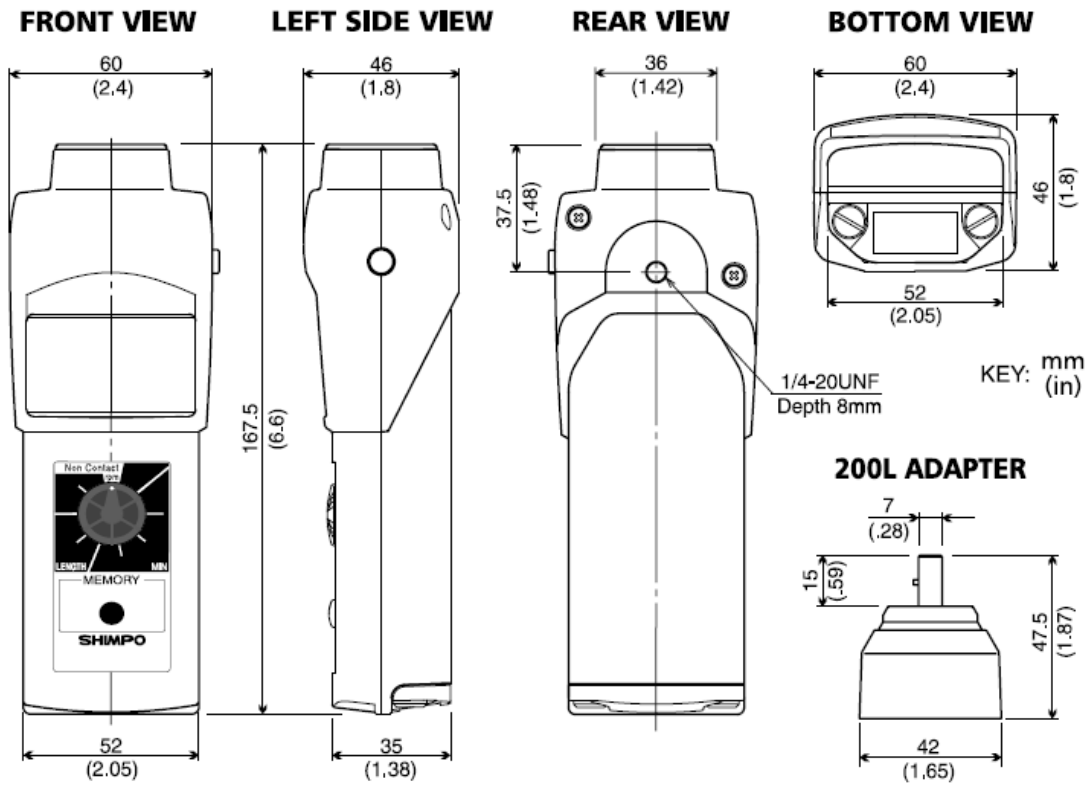


Cone Adapters - 1/2", 3/4" or 1 1/4"
For contact RPM measurement on motor shafts.
Cone - 1/2
Cone - 3/4
Cone - 1 1/4



Funnel Adapter - 1/2", 3/4"
For contact RPM measurement on motor shafts.
Funnel - 1/2
Funnel - 3/4

DIMENSIONS AND SPECIFICATIONS





SHIMPO
INSTRUMENTS

1701 Glenlake Avenue Itasca, IL 60143 · phone: (800) 237-7079 · fax: (630) 924-0342 · www.shimpoint.com

DT-209X API Section

Thank you for your purchase of the DT-209X handheld tachometer.
Please read this section carefully before using the DT-209X software.
This section covers the installation and description of the software for the DT-209X.

Keep this manual and software safe for future reference.

Software Compatibility

- The software is compatible with Windows XP and 2000.
- Separate USB drivers are provided and can be found in your installation CD.
- Display size: 480 X 640 or greater; Recommended 600 X 800
- Display Colors: 256 colors or greater; Recommended 65536 colors.
- USB 1.1

Advantages of USB

- Direct data acquisition (online measurements).
- Data transfer to spreadsheets (e.g. Excel).
- Transfer of stored data from the tachometer (Average and Standard Mode).
- Bus powered through the USB cable. (DT-209X switches from battery power to bus power).
- Graphic analysis, while data is stored.
- Multiple data sets

Different Modes

Standard Mode – Acquire standard data stored from the DT-209X memory. From this mode data are downloaded and separated by sets based on the number of memory blocks. Maximum of 24 blocks, each block can hold 10 data.

Average Mode – Acquire average data stored from the DT-209X memory. From this mode data are downloaded and listed as it have occurred, maximum of 30 memory blocks.

USB Mode – Direct acquisition of data from the DT-209X. From this mode online measurement is possible. The tachometer switches the battery to USB power provided by the host computer. Graph function is available, allowing the observation of data, as it is acquired from the DT-209X.



Observe caution when using this software and mounting the tachometer. Serious damage to equipment is possible when misused.

DT-209X API Manual CD Checklists

Included in your DT-209X package is a copy of the installation program for the DT-209X operating software. Each CD contains the following files.

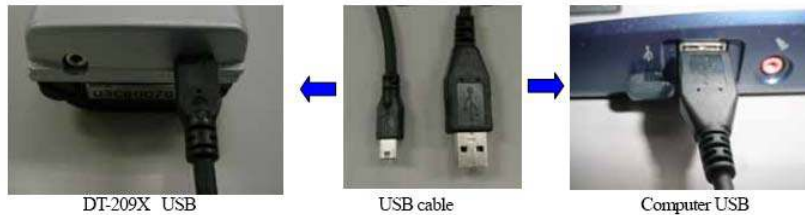
Folder			File name	Content
DT-209X	Driver	WindowsXP	DT209XUSB.dll	DLL of USB file.
			DT209XUSB.inf	inf of USB file.
			DT209XUSB.sys	sys of USB file.
		Windows2000	DT209XUSB.dll	DLL of USB file.
			DT209XUSB.inf	inf of USB file.
			DT209XUSB.sys	sys of USB file.
	PC_API		autorun.inf	Setup information on the application.
			DT209X.exe	Execution of the application file.
			init.reg	Registration of the application file.
			InstMsiA.Exe	Installation of the application file.
			InstMsiW.Exe	Installation of the application file.
			Main.ico	Icon of the application file.
			PCSetup.msi	Installer of the application package.
			Setup.Exe	Installation of the application file.
			Setup.Ini	Composition equipment of application file.

The DT-209X is compatible with Windows XP and 2000. It is strongly recommended that you close all open programs before installation.

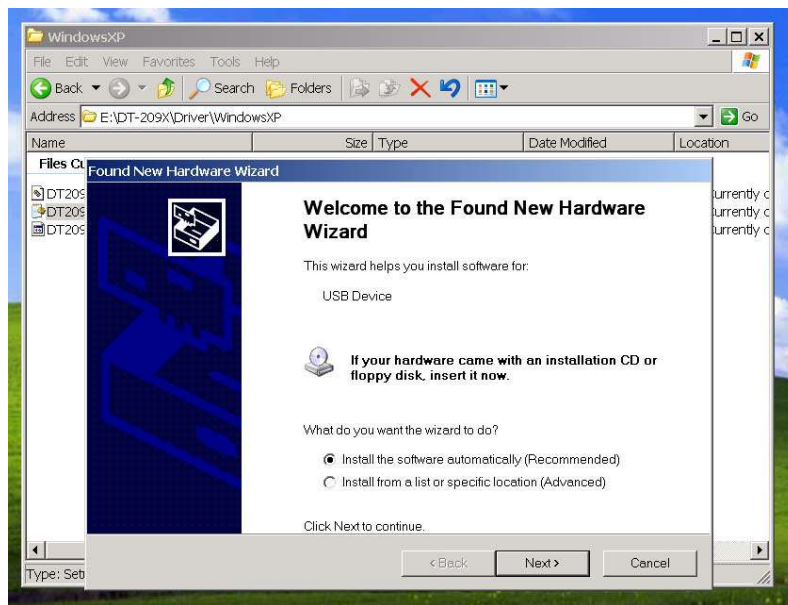
DT-209X USB Driver Installation: (WINDOWS XP)

Included in your package is a USB cable.

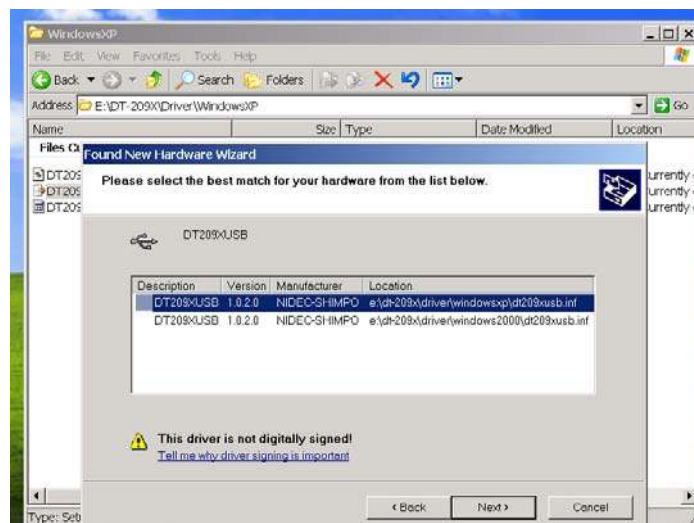
Attach USB cable to the handheld tachometer and host computer as shown below.



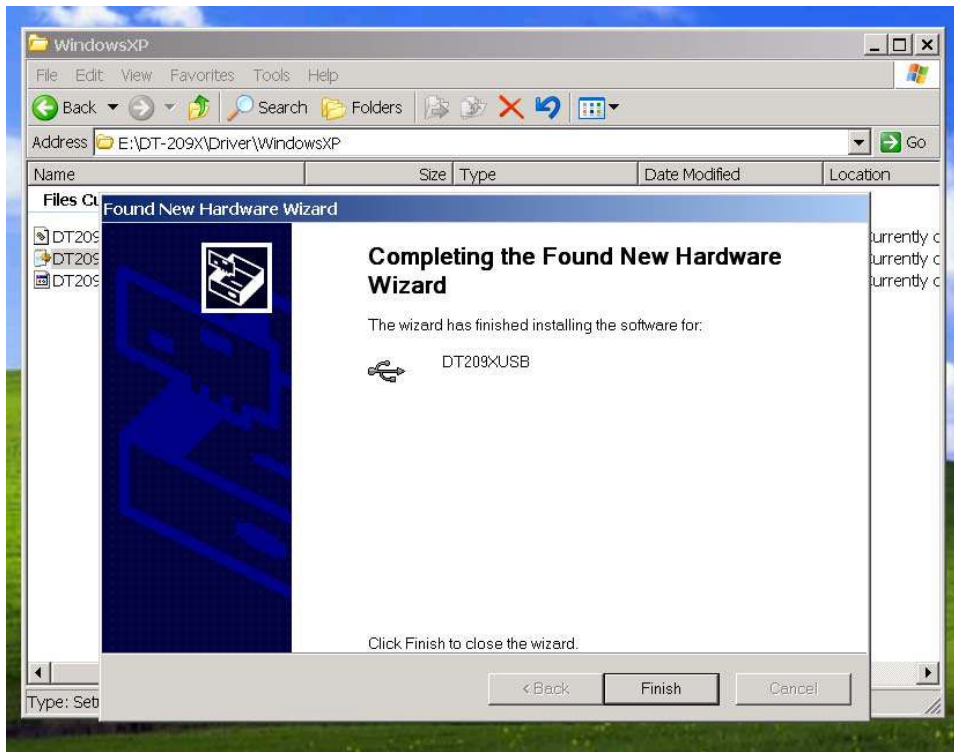
Windows will automatically detect the presence of new hardware.



Insert software CD and click on "Next". Windows will search for available drivers. Choose the driver suited for your operating system (Windows XP or Windows 2000).



Click next. Installation process will continue. After installation is completed the following window will be displayed.



Click on “Finish” to complete the installation of the DT-209X USB driver.

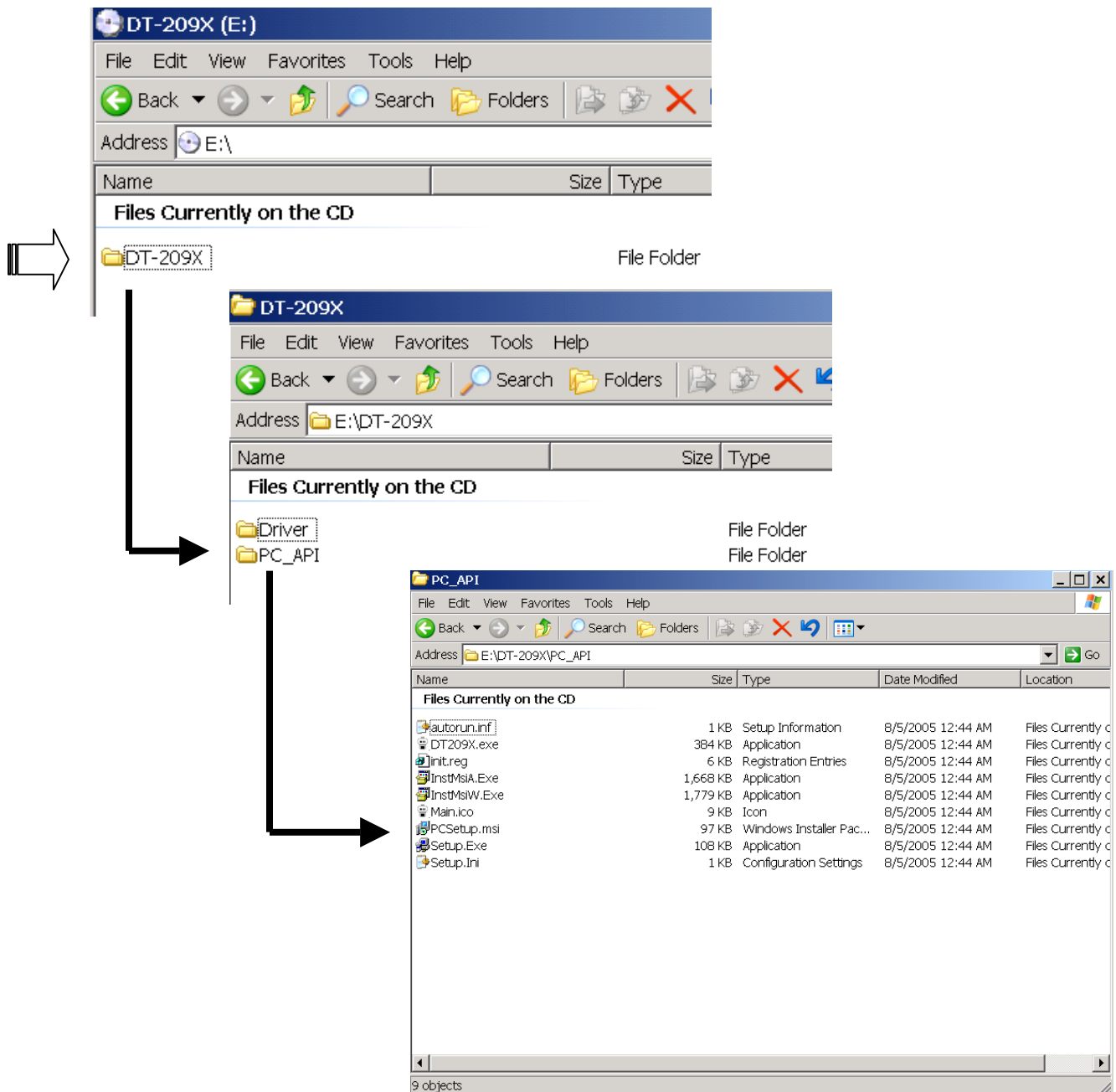


Separate installation is required for computers that will use multiple USB ports. Follow same procedure for each USB port that will be used.

Application Software Installation

Please follow the following procedures. It is strongly recommended that you close all open programs before installation.

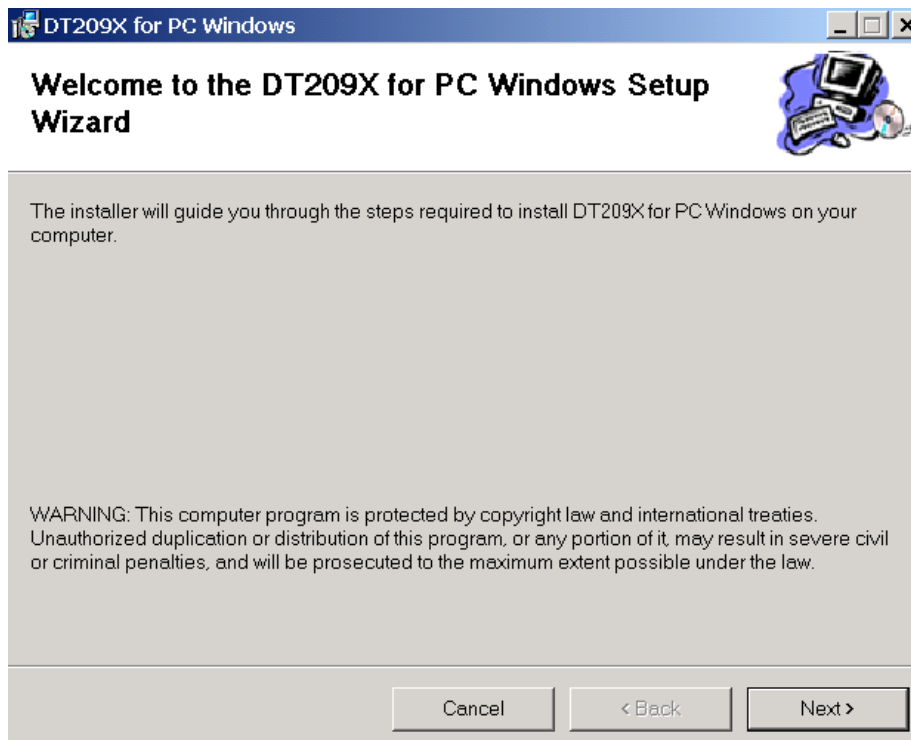
Browse the CD content. Go to PC_API folder



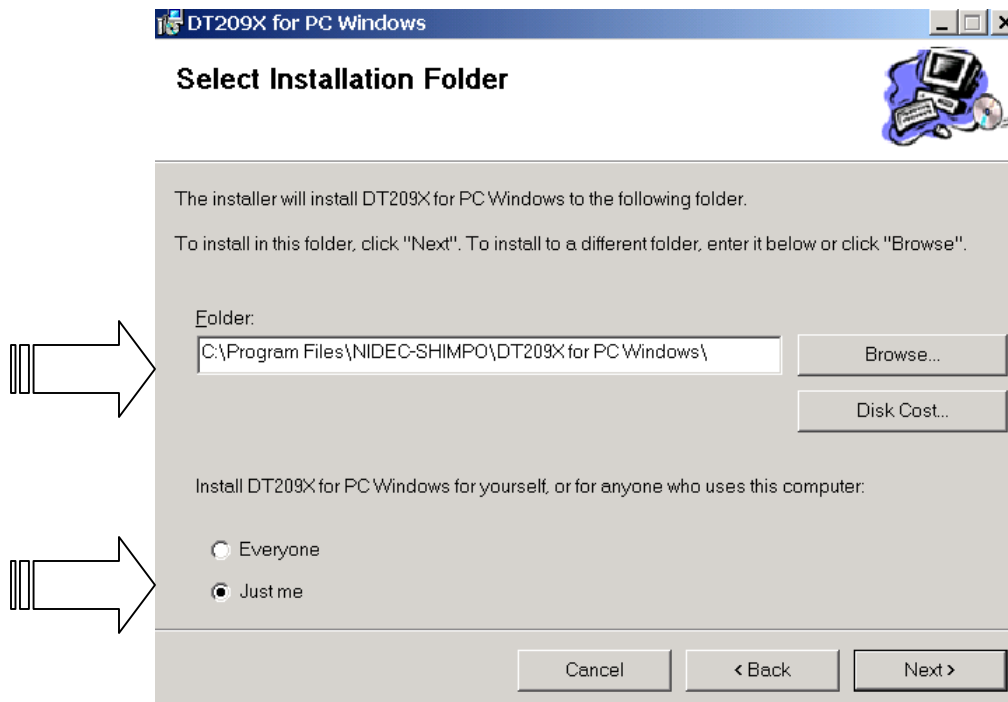
PCSetup.msi Windows installer package

Select Windows installer package to start program set up.

DT-209X set up wizard will open. Click “Next>”



Choose installation folder where DT-209X program will be stored.



Disk Cost

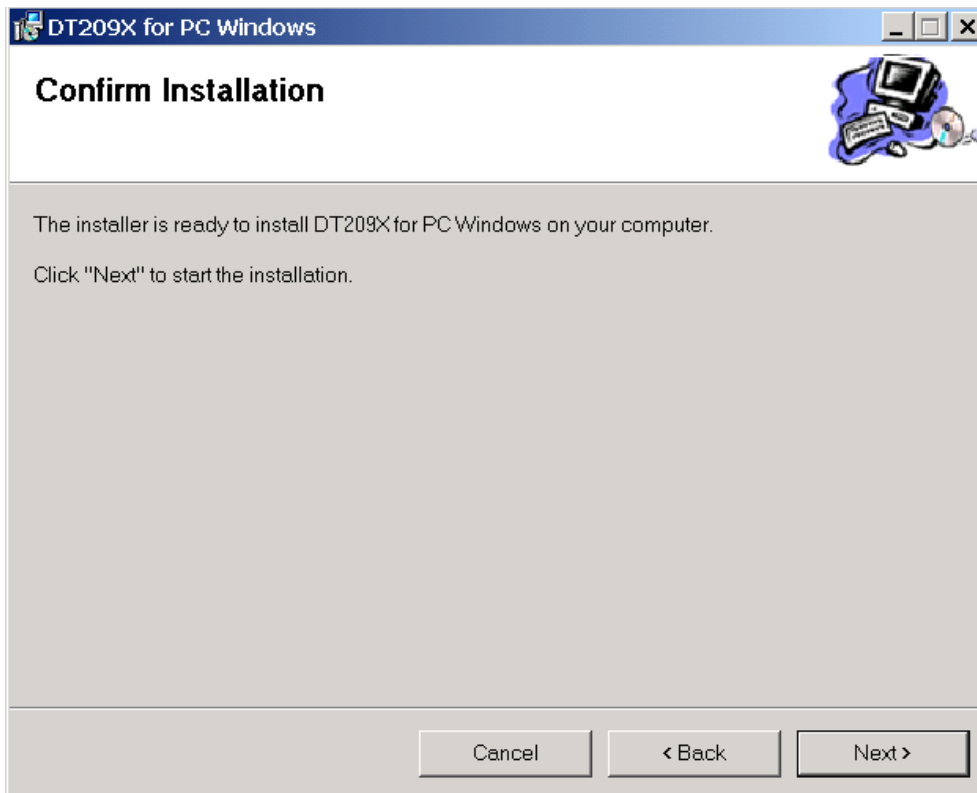
Space availability.

Browse

- Allows users to select location of the application
- Default set up: **C: \Program Files\NIDEC-SHIMPO\DT-209X for Windows**
- Select who can access the program (Computers with multiple users).

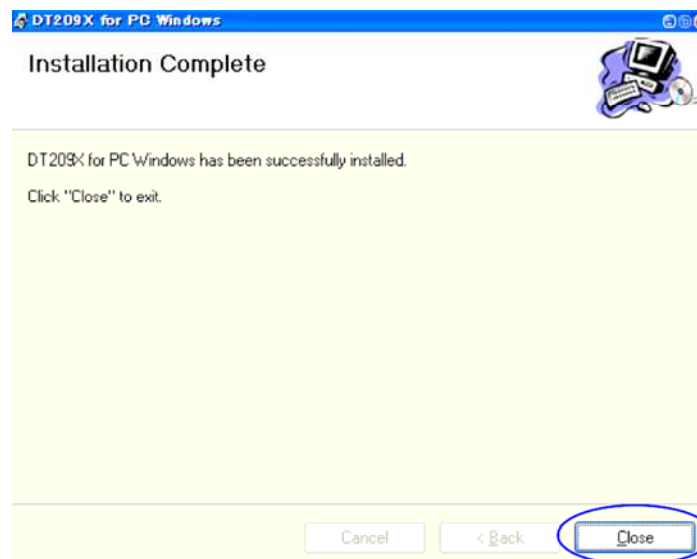
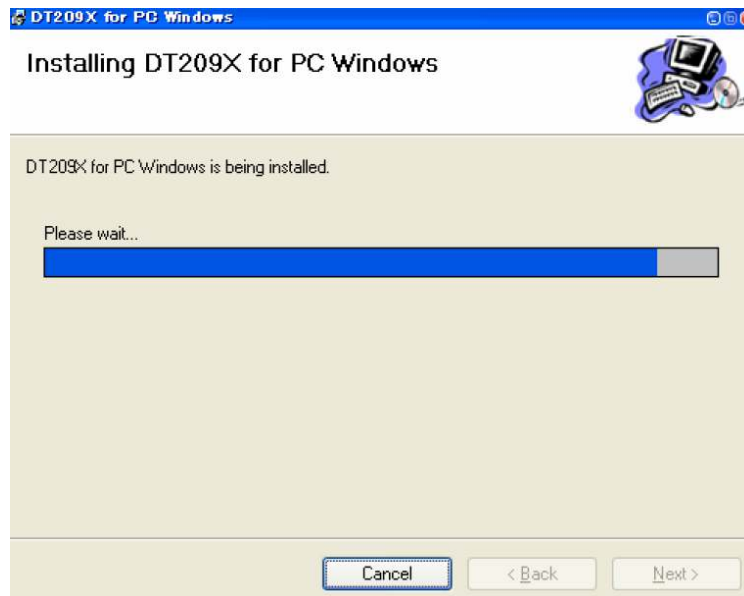


It is recommended to use the default settings for installation of the program for easy access.



Click “Next>” to start installation.

Set up wizard will start the installation process. Please allow a few minutes to complete the installation process.



Click on "Close" to complete the installation. DT-209X software is ready to use.

DT-209X Application Software

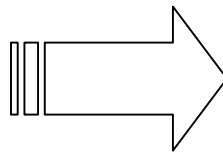
Read this section carefully as it holds important information regarding the DT-209X software and mode windows operation. From the Start Menu the DT-209X software is listed as NIDEC-SHIMPO.

There are two types of operation for the software

1. Download stored information from the handheld tachometer. (Use for Standard and Average Modes).
2. Online measurements, which is available in USB mode.

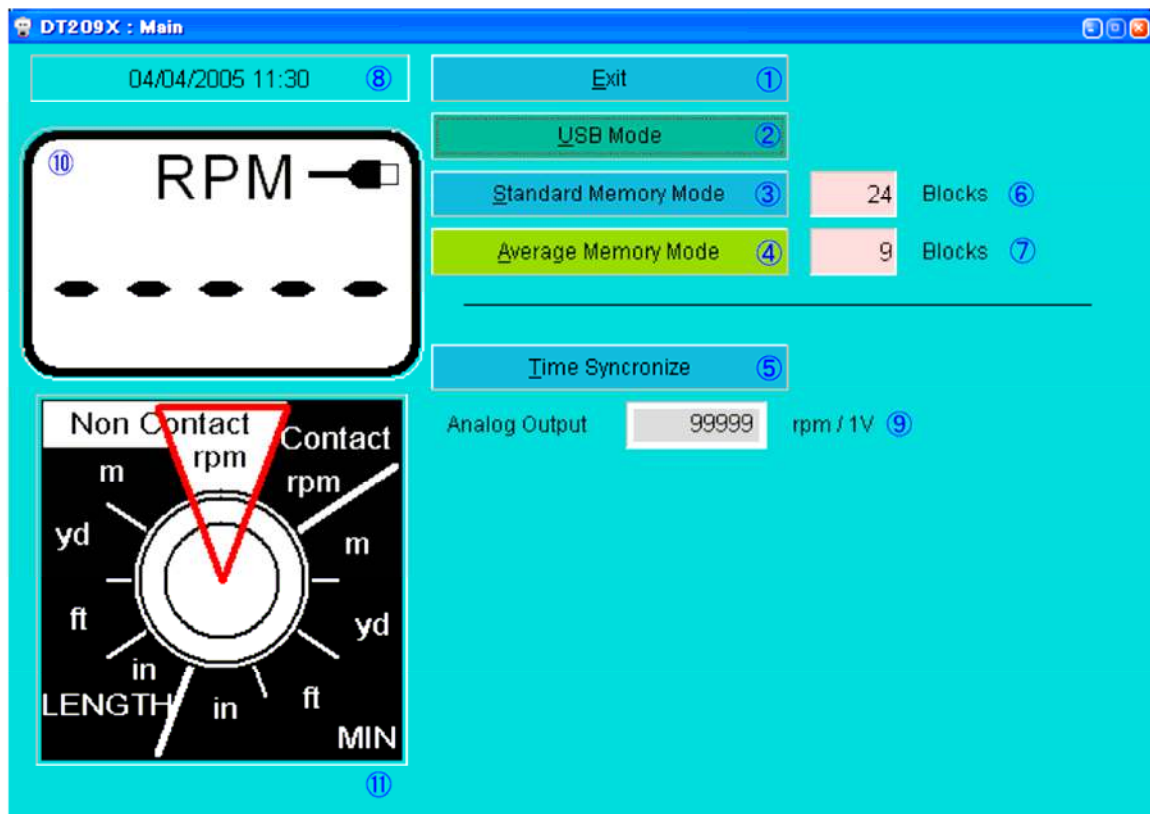


You can create a shortcut to the software application by dragging the DT-209X Icon to your desktop from the list of programs on your Start menu.



DT209X for PC Windows.Ink

Main Screen Description



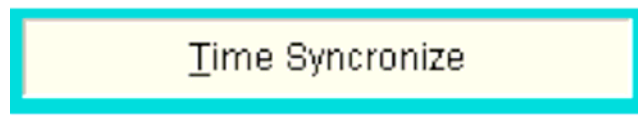
1. Exit – terminates the program and exits the software
2. USB Mode – Online measurement (Note: Make sure that the DT-209X Handheld mode selector switch is set to USB. Failure to do this will not allow communication between host computer and the DT-209X).
3. Standard Memory Mode – Mode option for downloading stored data from the tachometer in Standard Mode. Each memory block is separated by tabs located on the top of the table (Refer to Standard Mode Operation in this section).
4. Average Memory Mode – Mode option for downloading stored data from the tachometer in average memory.

Keystrokes Shortcut

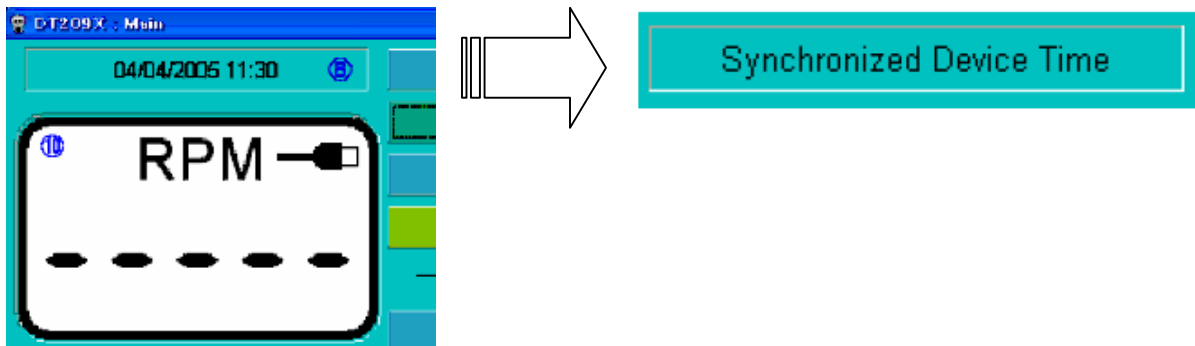


Tab Name	Key combination
Exit	Alt + E
USB Memory Mode	Alt + U
Standard Memory Mode	Alt + S
Average Memory Mode	Alt + A

5. Time Synchronize - Synchronize time with host computer for generating time stamping reports. To activate this feature click on time synchronize or press ALT + T from the keyboard.



After the feature is activated you will notice the time and date window showing the following message.



When synchronization is complete the window will return to the time and date format.

6. Standard Memory block Indicator – shows the number of memory blocks used in Standard mode (maximum of 24 memory blocks).
7. Average Memory Block Indicator – shows the number of memory blocks used in Average mode. (Maximum of 30 memory blocks).
8. Time and Date Window – displays time and date of measurements.
9. Programmable analog output - +1 V analog output from the tachometer can be scaled to match a specific application (Example: Chart recorders, comparator signals).

Table of maximum values for each unit selection

Unit	Full average	Unit	Full average
Non Contact rpm	99,999	Contact rpm	25,000
m/ MIN	3,810.0	yd/ MIN	4,167.0
ft/ MIN	12,500	in/ MIN	99,999
in	99,999	ft	99,999
Yd	99,999	m	99,999

Example: In Non-contact RPM Maximum expected speed is 1,000 RPM. Entering 1,000 in the programmable analog output will scale 1V from 0 to 1000 rpm. (500 rpm will output 0.5 V).



If the set rpm exceeded the analog output, it will maintain 1V. If the unit is change it defaults back to maximum value based from the Table of Maximum Values found on page 37.

- 10. Software display – displays values as measured by the tachometer. Reflects the unit of measure, USB connection status and data points.
- 11. Unit Selector Switch – Unit Selector Switch for the software. Units of measure can be changed directly from this option.

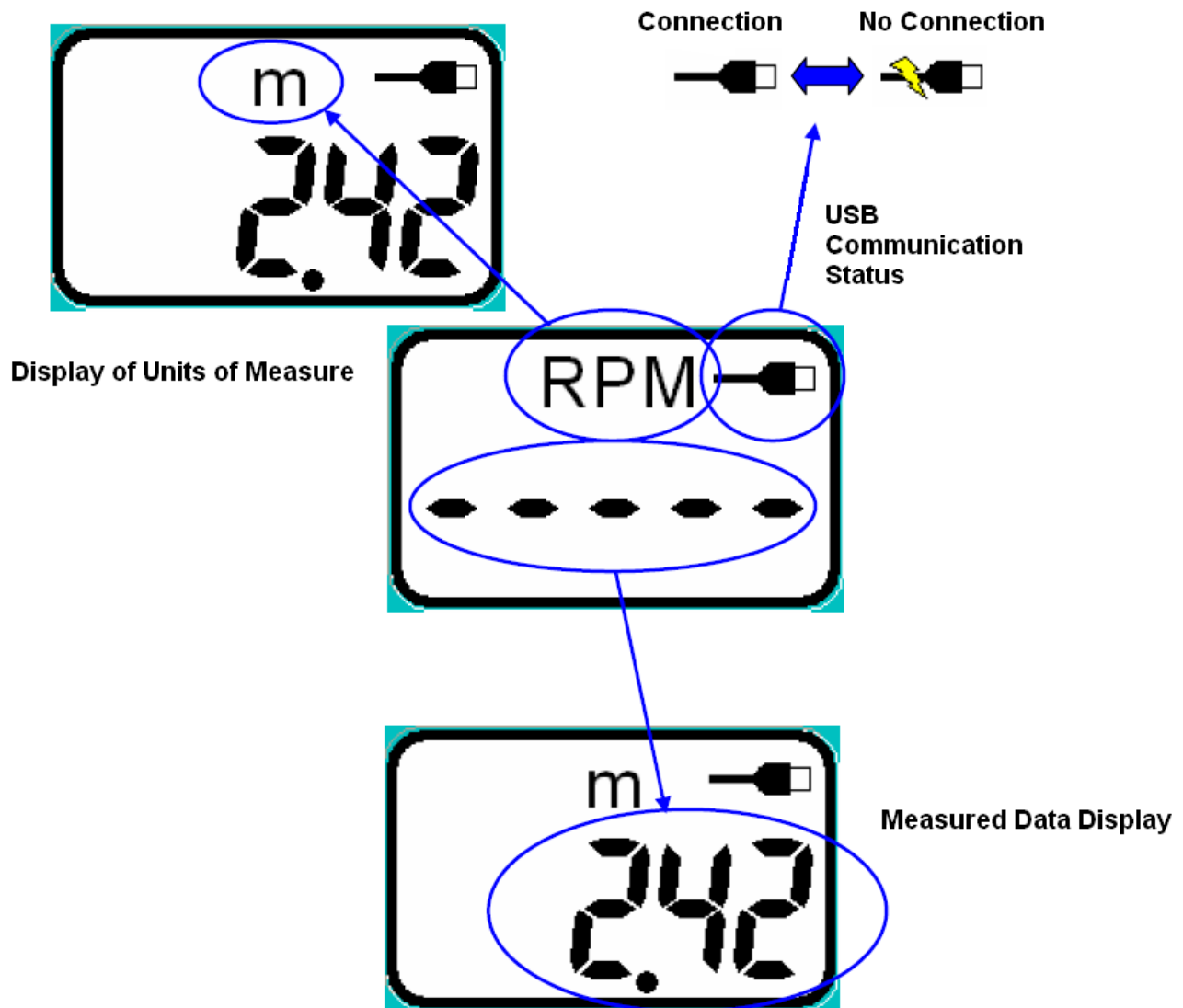


In USB mode and online measurements, the position of the unit selector switch from the tachometer becomes inactive. All selections are performed from the software.



In downloading data for both Standard and Average Mode, set the mode selector switch to USB. DT-209X will be bus powered from the USB port (disabling the auto shutoff feature to maintain communication).

Virtual Software LCD Display



Troubleshooting USB Communication

- If USB communication cannot be established, check the USB cable from the tachometer and the host PC.
- If after all connections are checked, communication is still inactive, unplug the USB cable from the PC port and plug it back in. Windows should be able to detect the cable.
- If after the above conditions are made and still no connection, restart the program.

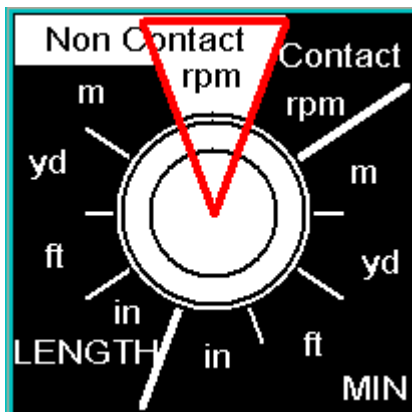
Unit Selector (Software)

Selecting units of measure can be changed easily from the software. Provided on the main window is a virtual copy of the handheld unit selector switch. The selected setting is highlighted in RED; changing the settings would require clicking the mouse and dragging the red highlight to the appropriate setting.

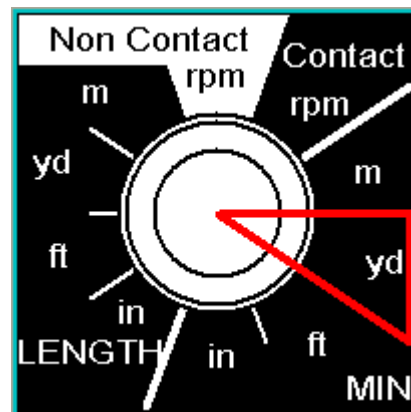


The software overrides the Unit Selector Switch from the tachometer. It is completely autonomous; all controls are transferred to the software.

Key feature for online measurements: The tachometer can be set to almost any place in the production line. Handheld tachometer is bus powered by the USB making it ideal for process monitoring. As long as the host computer is "ON" the tachometer will work (provided that the tachometer is set to USB mode).



NON-CONTACT RPM

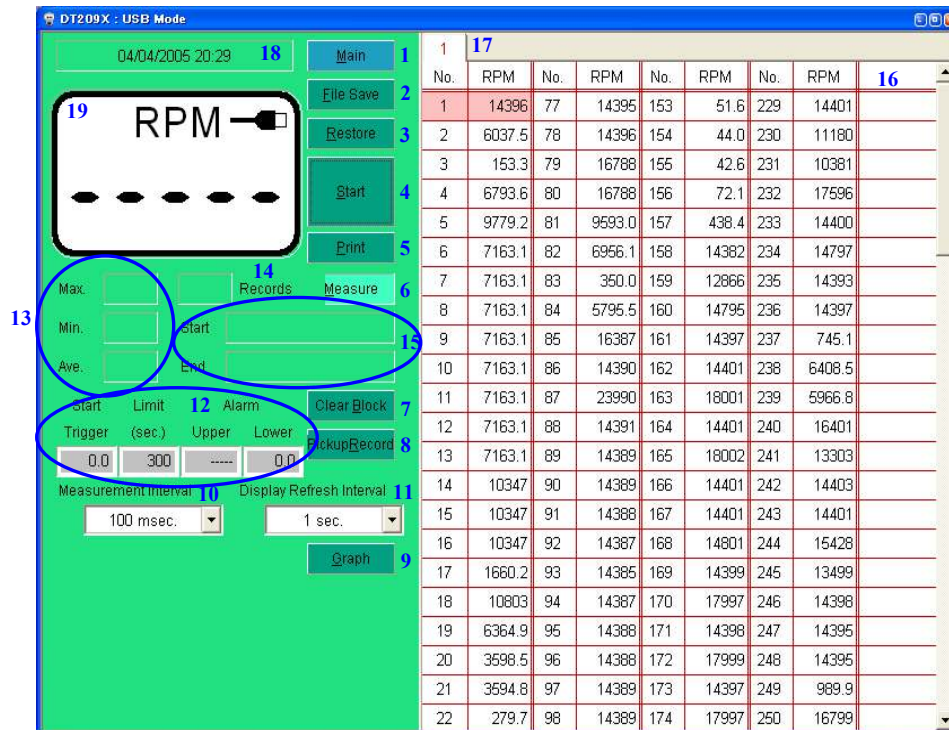


CONTACT MEASURING
YARDS PER MINUTE

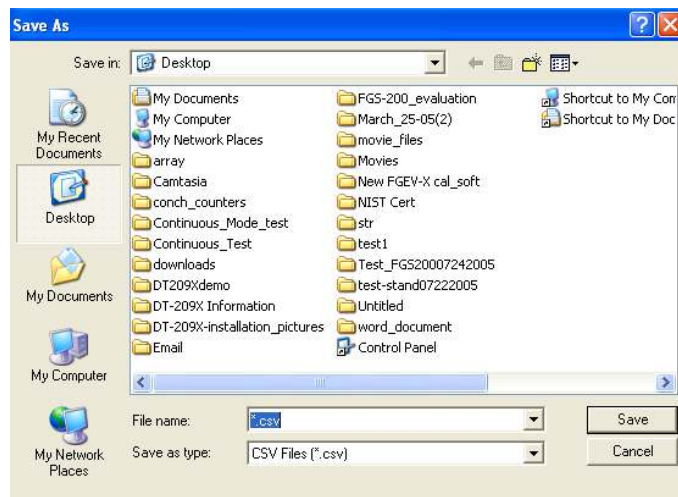
USB Mode Screen

USB mode screen display explanation

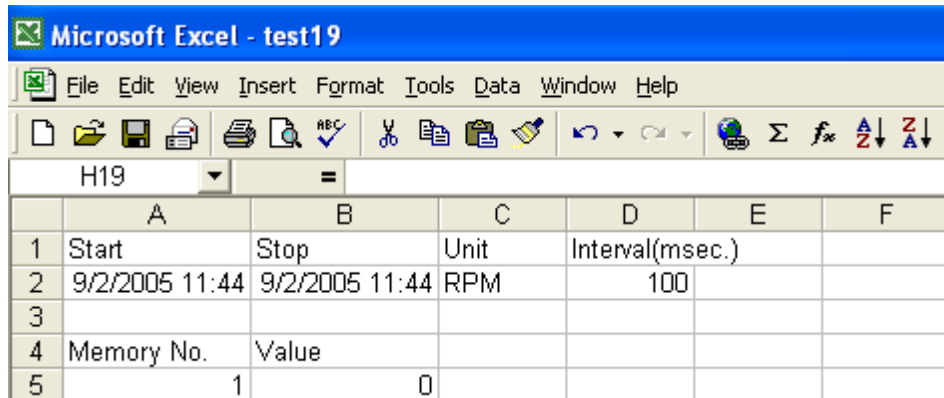
Make sure that the DT-209X handheld tachometer is set to USB mode on the selector switch. Any other settings will not allow the software to recognize the tachometer.



1. Main - Return to main screen button (ALT + M)
2. File Save – Save button, opens a Window for saving measured values. Files are saved based on the open set of data on the screen. (ALT + F).



Files are saved in CSV format, which can be opened by spreadsheets.



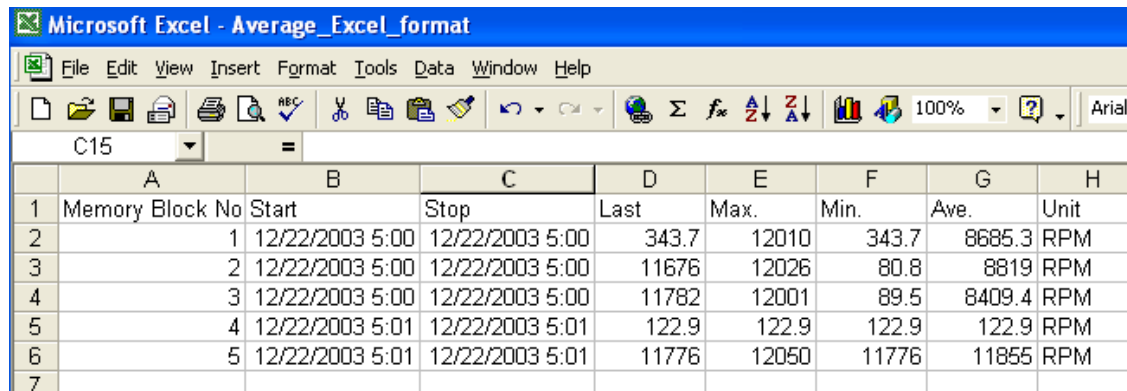
Microsoft Excel - test19

	A	B	C	D	E	F
1	Start	Stop	Unit	Interval(msec.)		
2	9/2/2005 11:44	9/2/2005 11:44	RPM	100		
3						
4	Memory No.	Value				
5	1	0				

Sample of data opened in Microsoft Excel (USB Mode).



Example: Tab of data displayed on the screen in USB mode is the only set of data that will be saved on file, each tab is saved separately. In standard mode all 24 blocks are saved, and in Average Mode all 30 blocks are saved.



Microsoft Excel - Average_Excel_format

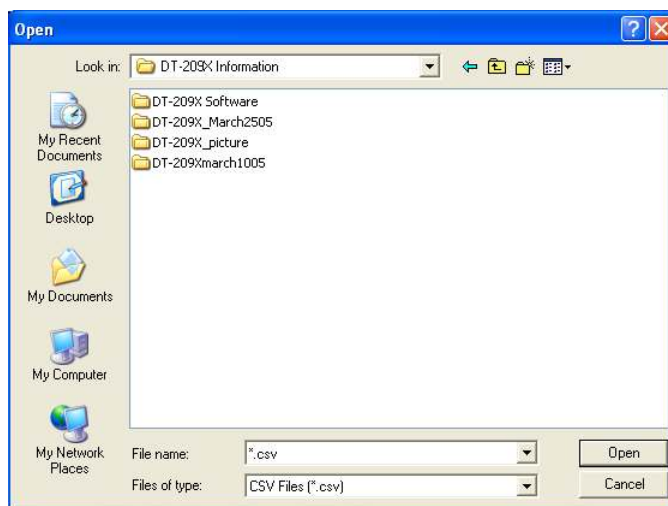
	A	B	C	D	E	F	G	H
1	Memory Block No	Start	Stop	Last	Max.	Min.	Ave.	Unit
2	1	12/22/2003 5:00	12/22/2003 5:00	343.7	12010	343.7	8685.3	RPM
3	2	12/22/2003 5:00	12/22/2003 5:00	11676	12026	80.8	8819	RPM
4	3	12/22/2003 5:00	12/22/2003 5:00	11782	12001	89.5	8409.4	RPM
5	4	12/22/2003 5:01	12/22/2003 5:01	122.9	122.9	122.9	122.9	RPM
6	5	12/22/2003 5:01	12/22/2003 5:01	11776	12050	11776	11855	RPM
7								

Sample of data opened in Microsoft Excel (Average Mode).

Microsoft Excel - Standard_format_Excel						
File Edit View Insert Format Tools Data Window Help						
M34						
	A	B	C	D	E	F
1	Memory	Start	Stop	Unit	Memory	Value
2	1	11/27/2003 11:02	11/27/2003 11:03	RPM	1	2511.6
3					2	2511.6
4					3	414.5
5					4	41.8
6					5	41.8
7					6	36.9
8					7	50.5
9					8	29.8
10					9	26.9
11					10	39.1
12	2	11/27/2003 11:03	11/27/2003 11:03	RPM	1	0
13					2	699.2
14					3	951.2
15					4	118.7
16					5	67.9
17					6	26.3
18					7	96.3
19					8	47.2
20					9	50.1
21					10	32
22	3	11/27/2003 11:03	11/27/2003 11:04	RPM	1	2640.4
23					2	307.2
24					3	2038.9
25					4	126.6
26					5	1368.8
27					6	3768.2
28					7	764.4
29					8	343
30					9	97.9
31					10	2794.3

Sample of data saved in Excel (Standard Mode).

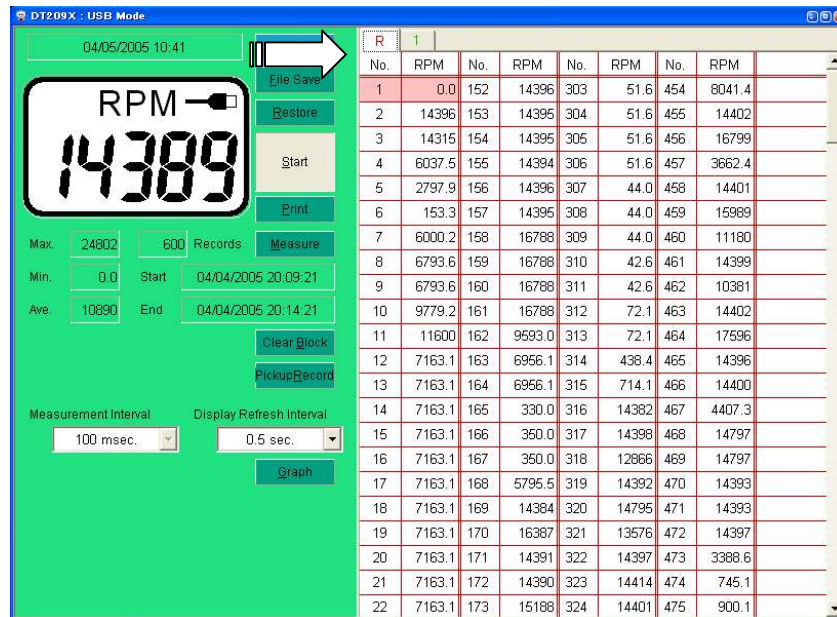
3. Restore – file retrieval button. Open saved file from the computer.
(Shortcut keystroke ALT + R)



File restore window

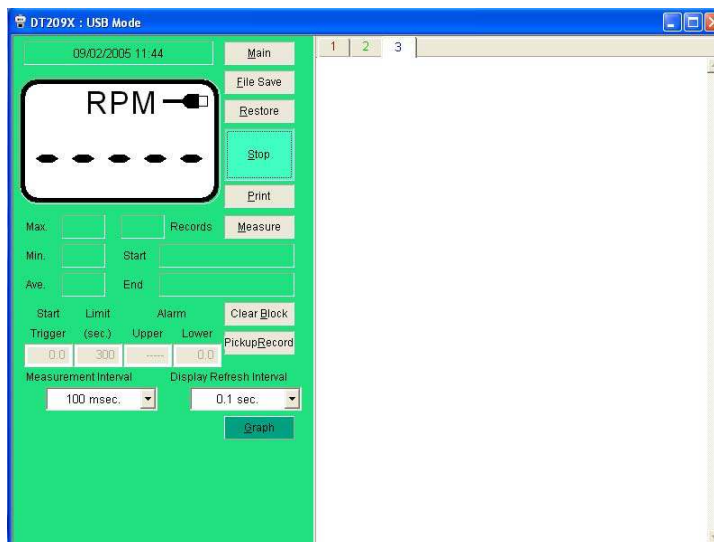


The letter “R” identifies file restored on the list of data shown from the screen.

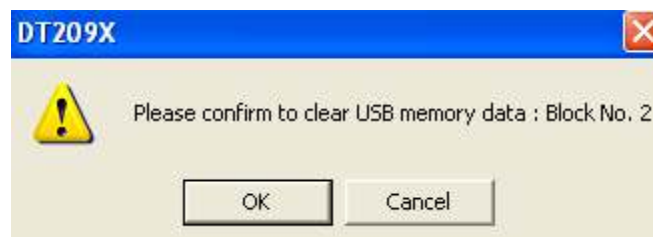


4. Start - measurement starts (Only applicable in USB mode). Keystroke shortcut “ALT + S”.

If software locks as shown below, please check the mode selector switch. Set switch selector to USB mode. This will allow control back to the software.

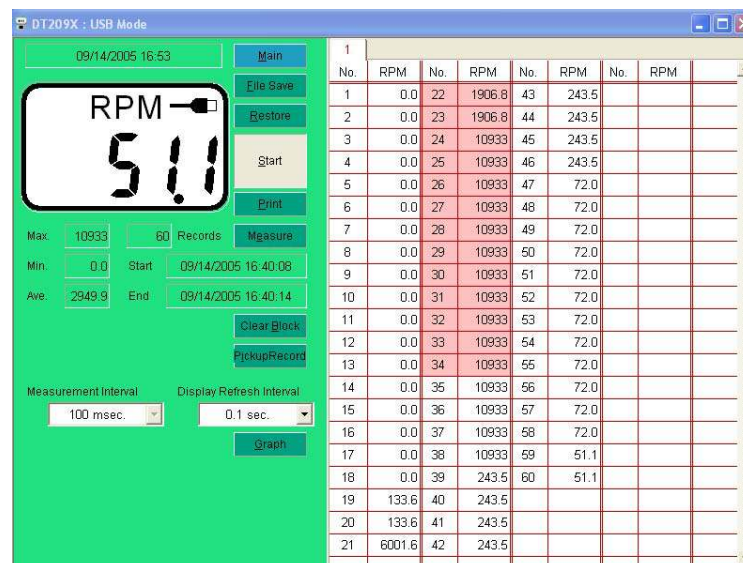


5. Print – Print function from the software allows transfer of images displayed from the screen to a local printer.
Keystroke shortcut “ALT + P”.
6. Measure – This button allows the creation of a new tab or set of data. It enables the “Start Button” to be active at the beginning of each test. If Measure is not selected, the Start button will not be active. Keystroke shortcut “ALT + M”
7. Clear Block – Deletes selected memory block from the set of online measurements. Once selected, a window will appear on the middle of the screen confirming the operation. After verification is complete, the displayed tab or set of data is deleted and moved down one memory block. Keystroke shortcut “ALT + B”.

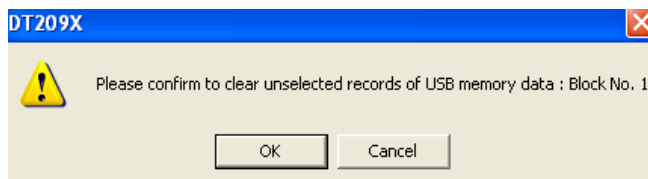


Confirmation Window. In USB memory block deletion is done by set.

8. PickupRecord – selects highlighted set of data (drag and select data with mouse). Pick up Record, deletes all measured values except the set that are highlighted. Keystroke shortcut “ALT + R”.



Highlighted selected data using the Pickup Record function.



Confirmation screen, indicating unselected data will be erased

9. Graph – Opens graph in another window, only available in USB mode. This feature allows observation of actual data while it occurs during measurement test. To return to table of measured values select “Close” located on the middle of the window.
10. Measurement Interval – option to set the measurement interval of the tachometer. This option allows change of measurement interval from 50msec to 5,000msec (5 seconds). **(Options: 50msec, 100msec, 500msec, 1,000msec, and 5,000msec).**
11. Display Refresh Interval – allows variable intervals of measurement to be displayed. This option is active before and after the measurements. Table of values can be displayed from 0.05sec – 30 sec. **(Options: 0.05sec, 0.1sec, 0.5sec, 1sec, 2sec, 5sec, 10sec, and 30sec)**

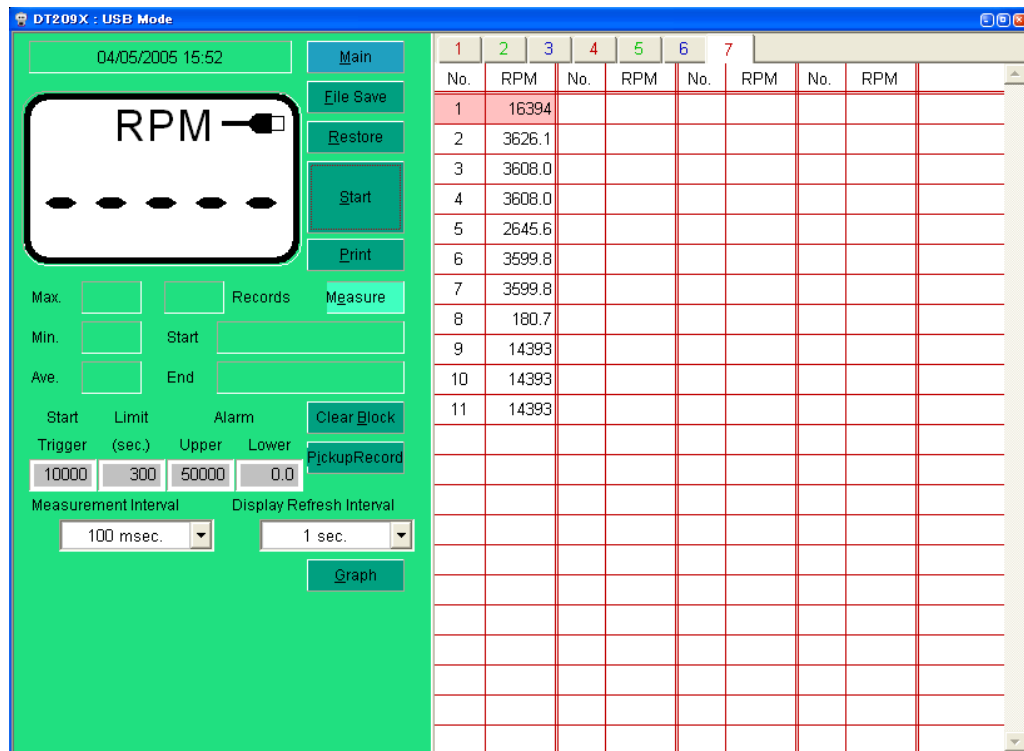


Display refresh interval automatically detects error in selection whenever an option is invalid. It compares value from the selected measurement interval. (Example: Measurement interval is selected at 100msec, and user would like to have a display refresh interval of 0.05 sec, this entry will be invalid because the display would need to be at least the same speed as the measurement interval or slower.).

12. Measurement Condition – Start, Limit and Alarm. Allows setting conditions to be monitored within a specific range.

Options	Explanation
Start Trigger	Measurement begins when the measured value is more than the value entered in the start trigger box.
Limit (sec.)	Measurement time is set. Measurements automatically stop after the set time is reached. When value is set to 0, it can measure infinitely as long as the host computer is on.
Alarm Upper	It warns if the measurement data becomes more than the set value.
Alarm Lower	It warns if the measurement data becomes lower than the set value.

Example: The start trigger is set to 10,000. The tachometer will only start recording values when measurements exceed 10,000.

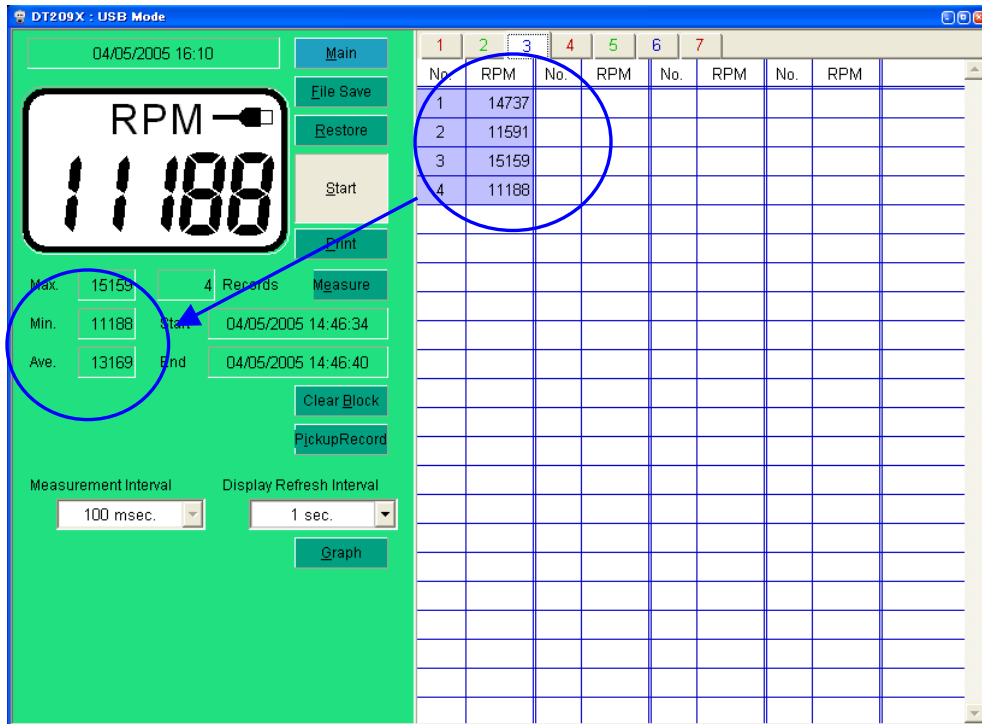


Alarm

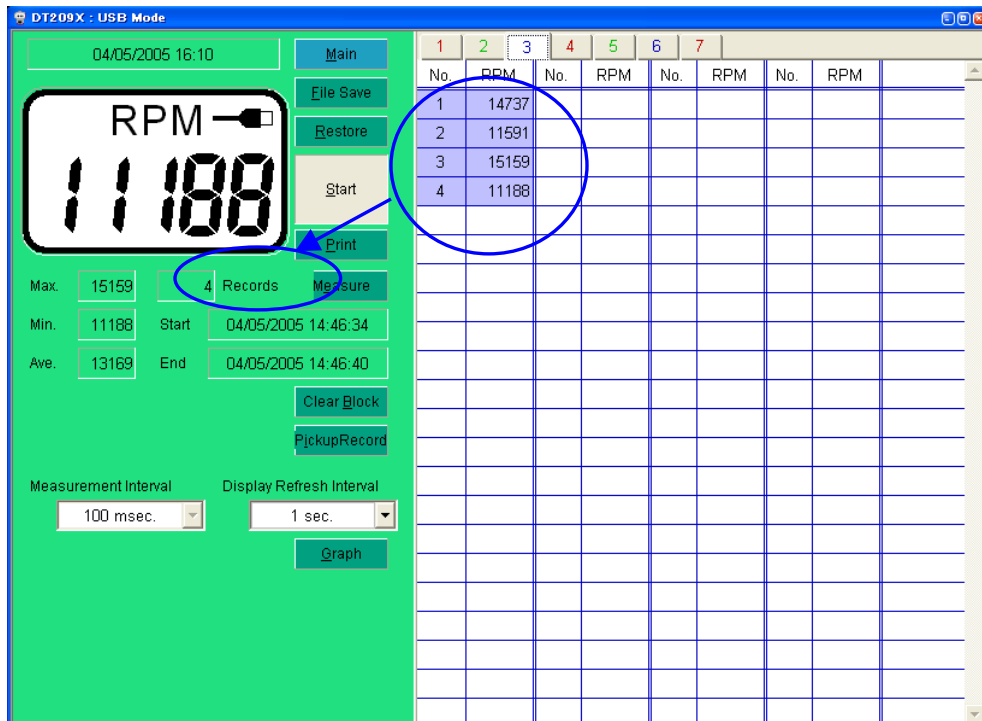
Whenever an alarm is generated the color of the DT-209X taskbar changes; the computer generates a buzzing sound.



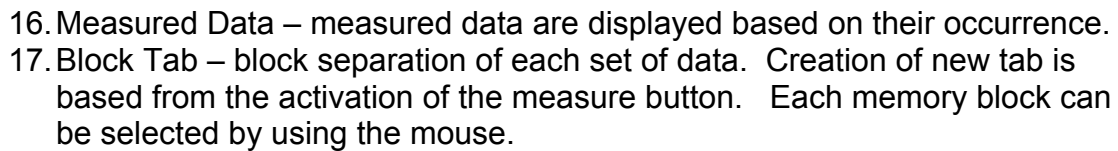
13. Maximum, Minimum, and Mean Value – The maximum, minimum and mean value are displayed based from the recorded data on the table.



14. Records – Displays number of measured data recorded.



Format: Month/ Day/ Year Time based on 24 Hours: Hour/Min/Seconds



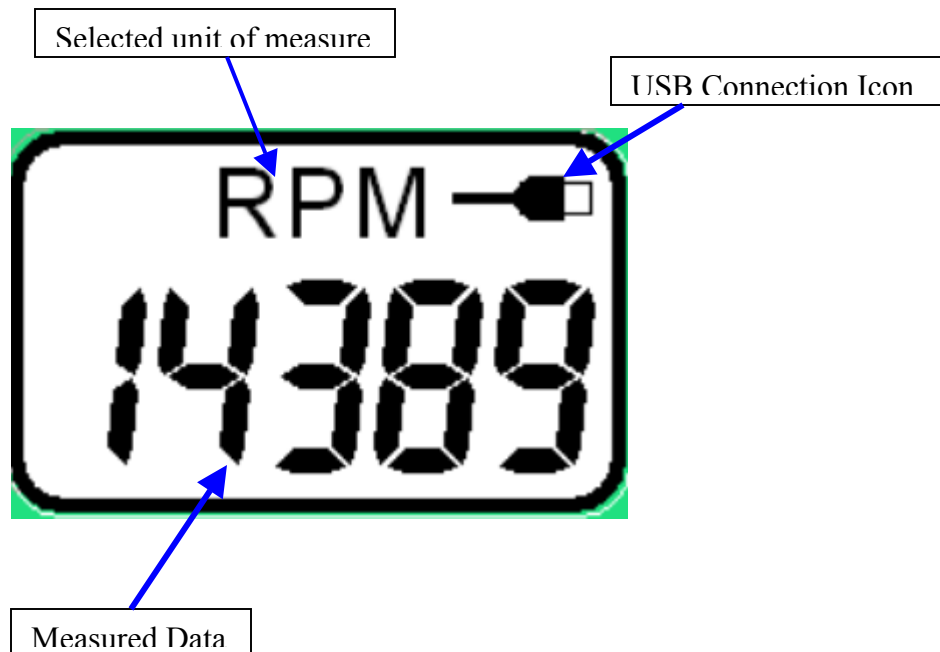
18. Time – Displays synchronized time from the host computer.

Format: **Month/Day/Year** followed by Time: **Hour/Minutes**



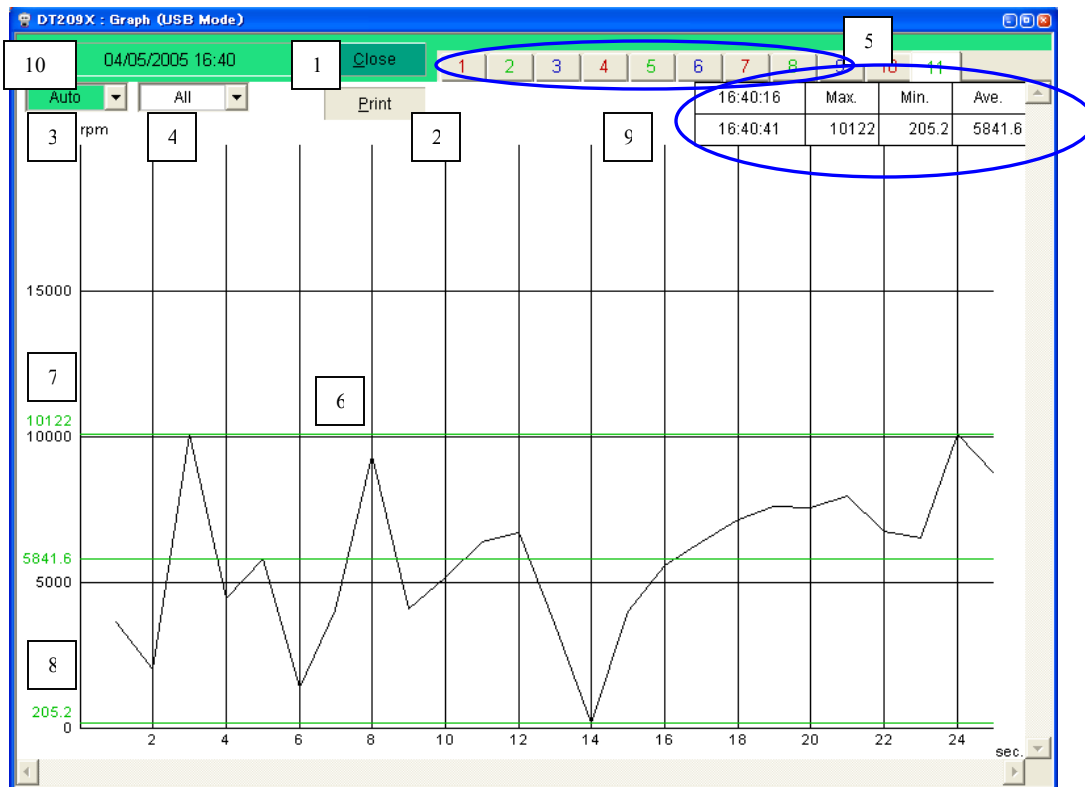
Before testing it is advisable to synchronize time with the host computer to update time and date for each record.

19. Software Display – Virtual display of the DT-209X software. It shows updates as measurement are taken. Display includes a USB connector icon to indicate good connection.

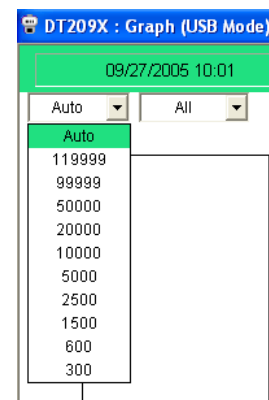


USB Mode Graph Screen

This section describes the parts and functions of the Graph Screen under USB mode.



1. Close – closes the graph screen and moves back the screen to the USB table (Keystroke shortcut ALT + C).
2. Print – prints the graph as displayed from the screen. Size of print is dependent from the settings of the printer. Print button is inactive when measurements are in progress. To print the graph, the graph screen should be closed and the measurements should be stopped. (Keystroke shortcut ALT + P).
3. Auto – vertical display control for measurements. Selecting values sends the graph to a particular vertical range. Side scroll bars are also available for utilization. Recommended that this is set to auto for optimum view of the graph.



4. All – horizontal display control, time axis.

Setting	Explanation
All	It automatically sets time present while the measurements are in progress. It is also the time after all measurements are stopped.
Limit	Setting Limit of the USB main screen The same range setting is set to “All” when Limit is set to 0.
10sec.	Selectable time range of each value, optional scroll bars are provided for manual view.
100sec.	
300sec.	

5. Tab – numbered tabs separate sets of data captured from the tachometer. Each set has a corresponding graph that can be viewed from the USB Graph Screen.
6. Measurement data – horizontal line tracing the measured values as it occurs. This green line is always changing, based from the changes in measurement.
7. Maximum Value Bar – horizontal line tracing the maximum value measured.
8. Minimum Value Bar – horizontal line tracing the minimum value measured.
9. Max, Min, Average Value Bar – Small table located on the upper left hand corner of the graph. This bar is a quick summary of the maximum, minimum and average values of the data measured.
10. Time – Time recorded when the measurements took place. Format as follows: MM/DD/YYYY, followed by time in 24-hour format HH:MM.

Standard Mode Screen

Explanation of the Standard mode screen:



In this mode data can be downloaded from the DT-209X memory. Memory tab separates each memory block.

Initial Screen of Standard Mode

DT209X : Standard Memory Mode

04/05/2005 18:22

Main

File Save

Restore

Down Load

Print

Max. Records

Min. Start

Ave. End

Clear Device Memory

1

2

3

4

5

6

Screen after data are downloaded

DTZ09X : Standard Memory Mode

04/05/2005 18:24

m 24.2

Max. 2.38 Min. 0.92 Ave. 1.88

3 Records

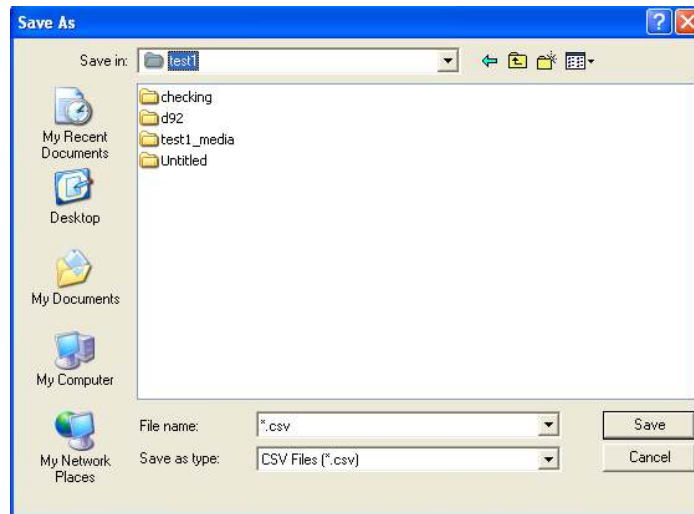
Start 03/20/2004 07:56:48

End 03/20/2004 07:56:57

Clear Device Memory

No.	Time	m
1	07:56:50	0.92
2	07:56:53	2.34
3	07:56:55	2.38

1. Main – returns to the main screen (Shortcut keystroke ALT + M).
2. File Save – Downloaded data from the DT-209X is saved in CSV format. (Shortcut Keystroke – ALT + F).



Create name of file for the set of measurements. File save is inactive when there is no data available for download.

The CSV file can be directly imported to spreadsheets like Microsoft Excel. CSV file is stored by the following formats.

"Memory Block No.", "Start", "Stop", "Unit", "Memory No.", "Value", "Time" ←Set each name

1,06/07/2004 12:54:26,06/07/2004 12:54:42,"RPM",

Memory Block 1

,,,1,120,21:49:11

← No.1 Measurement data

,,,2,306,12:54:31

←No.2 Measurement data

,,,3,196,12:54:36

,,,4,237,12:54:38

,,,5,206,12:54:40

←No.5 Measurement data

2,06/07/2004 12:54:44,06/07/2004 12:54:57,"RPM",

Memory Block 2

,,,1,37,12:54:42

←Set date No.1 Measurement data

,,,2,280,12:54:48

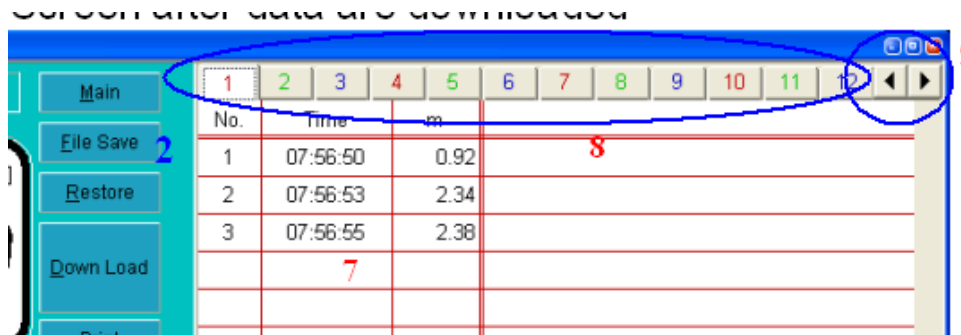
←No.2 Measurement data

,,,3,157,12:54:52

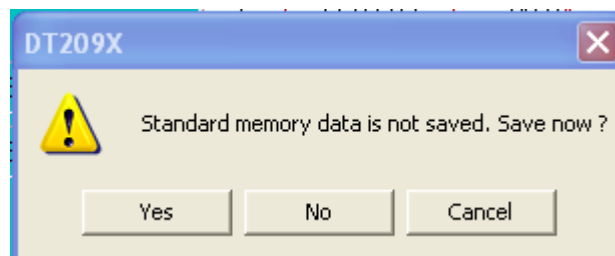
,,,4,173,12:54:54

←No.4 Measurement data

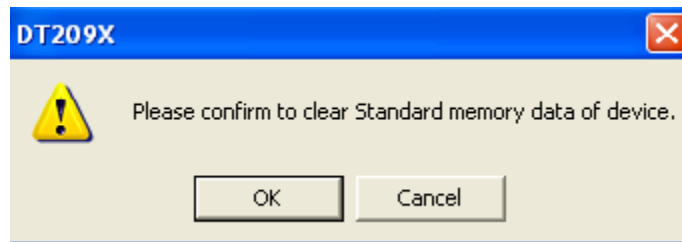
3. Restore – opens previously saved file. From the screen the restored file has an “R” Tab. (Shortcut Keystroke ALT + R).
4. Download – download function from the software. This allows transfer of stored data from the Tachometer to the software. (Shortcut Keystroke ALT + D).
Numbered tabs separates each memory block.



5. Print – print function for the table of values. Size of print is dependent on the attached printer settings. (Shortcut Keystroke ALT + P).
6. Clear Device Memory – stored data from the tachometer is cleared. CCCCC is displayed from the tachometer LCD screen once confirmation is complete. Shown below is the confirmation window for the clear device memory to proceed. Selecting “YES” opens the save file window, selecting “NO” opens a confirmation window, selecting “CANCEL”, exits out the clear device memory function.



It is necessary that there is connection with the DT-209X and the host computer for the Clear device memory to work.



Once “OK” is selected the stored data from the DT-209X is cleared. No further retrieval of previously stored data is possible. Selecting Cancel exits the Clear device memory function.

7. Measurement Data – measured values stored in each memory block is displayed.
8. Block Tab – Memory block separation. Each tab corresponds to a set of data stored per memory block. In Standard Mode, there are 24 Blocks or 24 Tabs possible.
9. Scroll – Advances screen values left or right. Useful when screen is minimized.
10. Max, Min, and Ave – quick summary of displayed data. Maximum, minimum and average values are calculated and displayed per set of data displayed from the software screen.
11. Records – number of data displayed from the table.
12. Measurement Time – displays the time from the beginning to the end of each measurement. Format of display **MM/DD/YYYY**, followed by time in the 24 hour format **HH:MM:SS**
13. Time – Synchronized time with the host computer.

Average Mode Screen

Average mode screen description and explanation.

Average Mode screen initial window prior to download

DT209X : Average Memory Mode

04/06/2005 11:49

Main 1

File Save 2

Restore 3

Down Load 4

Print 5

RPM

Max. [] [] Blocks

Min. [] Start []

Ave. [] End []

Clear Device Memory 6

No.	Start	End	Last	Max.	Min.	Ave.	Unit
-----	-------	-----	------	------	------	------	------

Average Mode Screen after data are downloaded

DT209X : Average Memory Mode

04/06/2005 11:50

Main 1

File Save 2

Restore 3

Down Load 4

Print 5

RPM 386.4

Max. 3494.4 9 Blocks

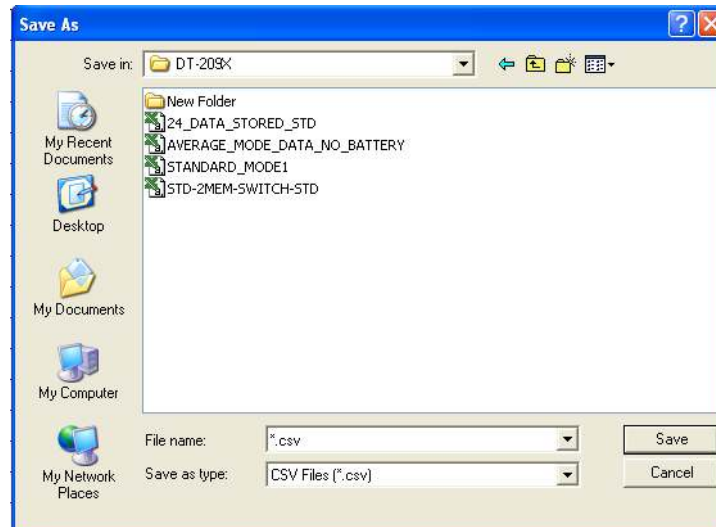
Min. 386.4 Start 03/20/2004 09:17:41

Ave. 2717.4 End 03/20/2004 09:17:46

Clear Device Memory 10

No.	Start	End	Last	Max.	Min.	Ave.	Unit
1	09:17:41	09:17:46	386.4	3494.4	386.4	2717.4	RPM
2	09:17:48	09:17:51	93.3	93.3	93.3	93.3	RPM
3	09:18:06	09:18:11	1.16	1.16	0.88	1.12	m
4	09:18:21	09:18:25	0.56	0.56	0.32	0.54	YRd
5	09:18:57	09:19:00	0.32	0.32	0.04	0.20	YRd
6	10:10:48	10:10:55	6.17	122.70	6.17	76.19	m/M
7	10:11:39	10:11:46	0.82	0.82	0.02	0.48	YRd
8	06:58:47	06:59:06	13486	14404	8185.8	11912	RPM
9	07:07:14	07:07:21	4403.9	4407.4	2740.9	3744.0	RPM

1. Main – returns to the main screen. (Shortcut Keystroke ALT + M)
2. File Save – Saves downloaded data from the tachometer. File save button is inactive when no downloaded data is available. Data are saved in .CSV format, which can be imported directly to spreadsheets like Microsoft Excel. (Shortcut Keystroke ALT + F)



File save window

The CSV file is stored in this format.

"Memory Block No.", "Start", "Stop", "Last", "Max.", "Min.", "Ave.", "Unit"
 1,03/20/2004 09:17:41,03/20/2004 09:17:46,386.4,3494.4,386.4,2717.4,"RPM"
 2,03/20/2004 09:17:48,03/20/2004 09:17:51,93.3,93.3,93.3,93.3,"RPM"
 3,03/20/2004 09:18:06,03/20/2004 09:18:11,1.16,1.16,0.88,1.12," m "
 4,03/20/2004 09:18:21,03/20/2004 09:18:25,0.56,0.56,0.32,0.54,"YRd"
 5,03/20/2004 09:18:57,03/20/2004 09:19:00,0.32,0.32,0.04,0.20,"YRd"
 6,03/20/2004 10:10:48,03/20/2004 10:10:55,6.17,122.70,6.17,76.19,"m/M"
 7,03/20/2004 10:11:39,03/20/2004 10:11:46,0.82,0.82,0.02,0.48,"YRd"
 8,03/31/2005 06:58:47,03/31/2005 06:59:06,13486,14404,8185.8,11912,"RPM"
 9,03/31/2005 07:07:14,03/31/2005 07:07:21,4403.9,4407.4,2740.9,3744.0,"RPM"

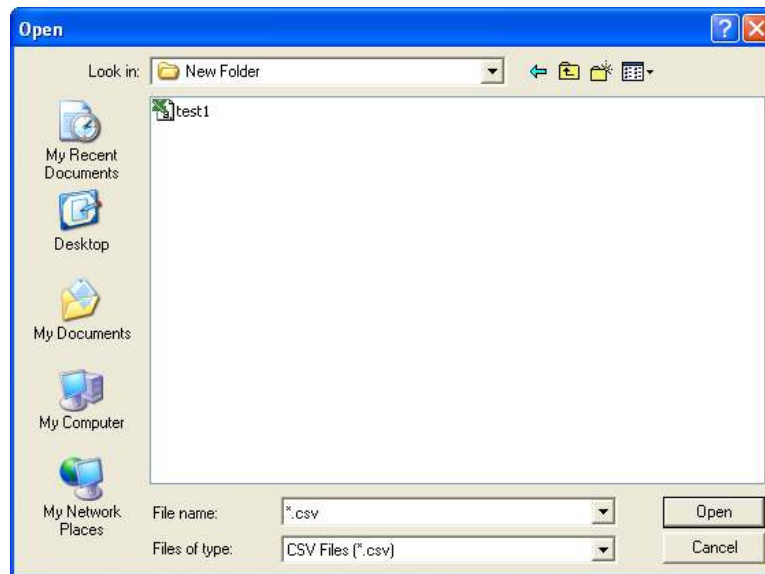
Block No.1

Block No.9

3. Restore – retrieves previously measured data for review. Select Average file from the open window for review. (Shortcut Keystroke ALT + R).



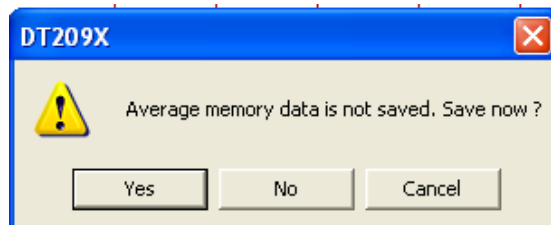
Stored CSV files from different modes are not accessible to the wrong window. Example: CSV file saved in USB mode is not accessible for retrieval from the Average or Standard Mode Screen.



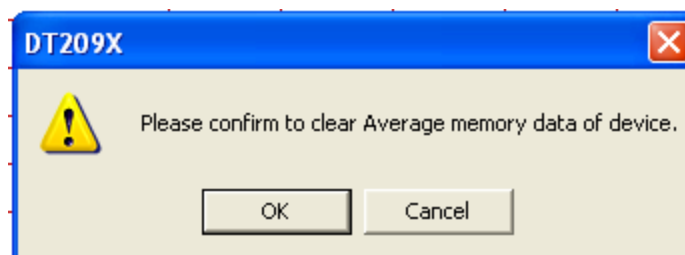
Restore File Window

4. Download – download saved data from the DT-209X. All blocks are displayed based from their occurrence. (Keystroke shortcut ALT + D).
5. Print – print function for the displayed table. Size of print out is dependent on the attached printer settings. (Keystroke shortcut ALT + P).
6. Clear Device Memory – erases stored data from the tachometer. Once clear device memory is selected, the data from the tachometer cannot be retrieved further.

Selecting the clear device memory opens a dialogue window informing the user if the data displayed is not yet saved.



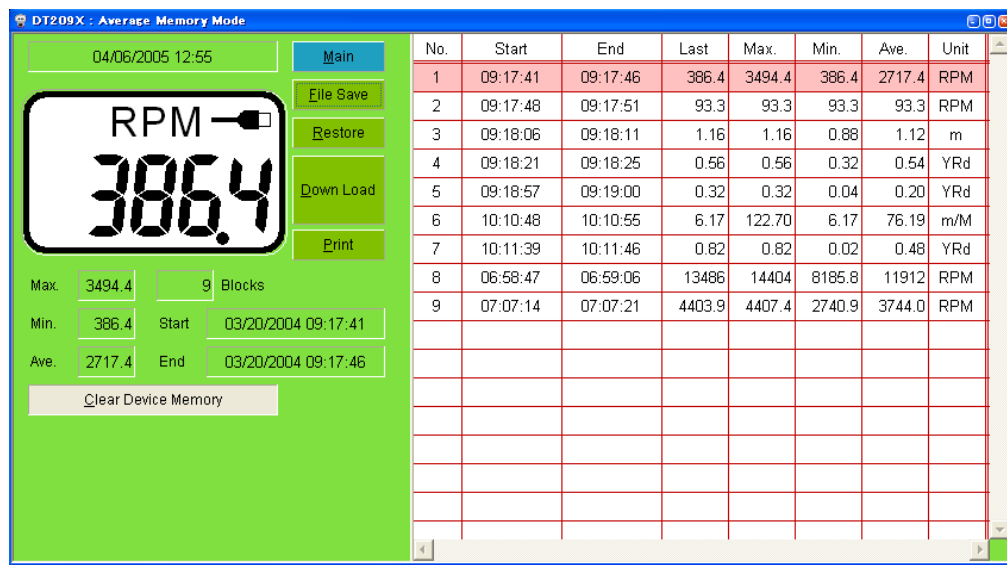
Selecting “YES” opens the File save window; selecting “NO” opens a confirmation window, selecting Cancel exits out of the Clear Device Memory Function. Shown below is the confirmation window.



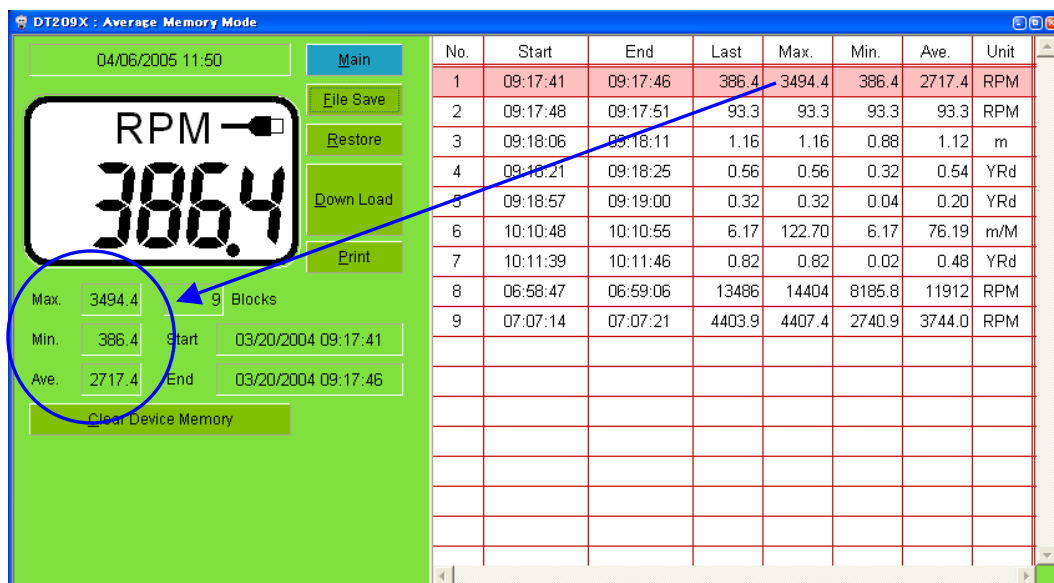
Once “OK” is selected, all the Average mode stored data from the tachometer are erased, CCCCC is displayed from the DT-209X LCD display.

No further retrieval is possible.

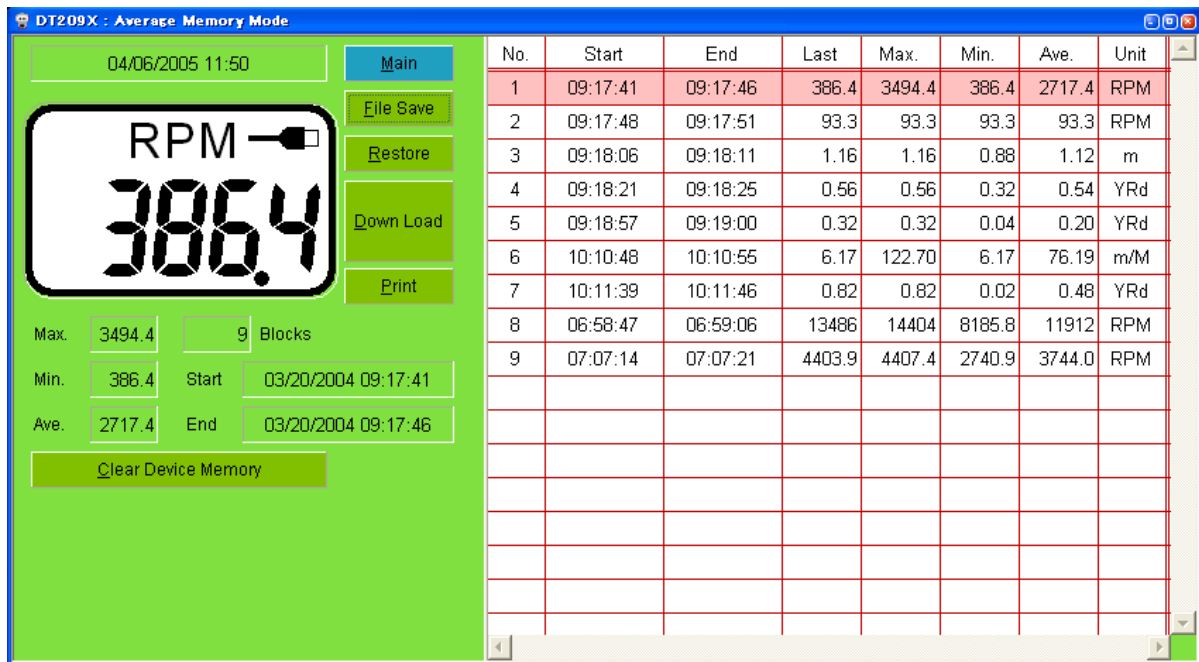
7. Data and date of Measurement – displays the recorded average including the beginning and end of each memory block. This information changes based on the highlighted data block. Format of information: 24-hour time format HH:MM:SS, followed by Last, Max, Min, Ave, and Unit.



8. Max, Min, Ave – quick summary of the data block selected from the list.



9. Blocks – Displays number of memory blocks downloaded from the tachometer.



10. Measurement Time - displays the beginning and end of each memory block. This information changes based on the highlighted data block. Format of information: MM/DD/YYYY, followed by the 24 hour time format HH:MM:SS.
11. Time – Synchronized time based from the computer. This reflects the time when the data is accessed from the tachometer.

Display Hold:

This feature is an enhancement to the DT-209X software, designed for users which requires the ability to limit the amount of time the tachometer holds the last reading after the source of the signal ceases.

The Display Hold feature is useful for applications that need to show deceleration and immediate stop.

Specifications:

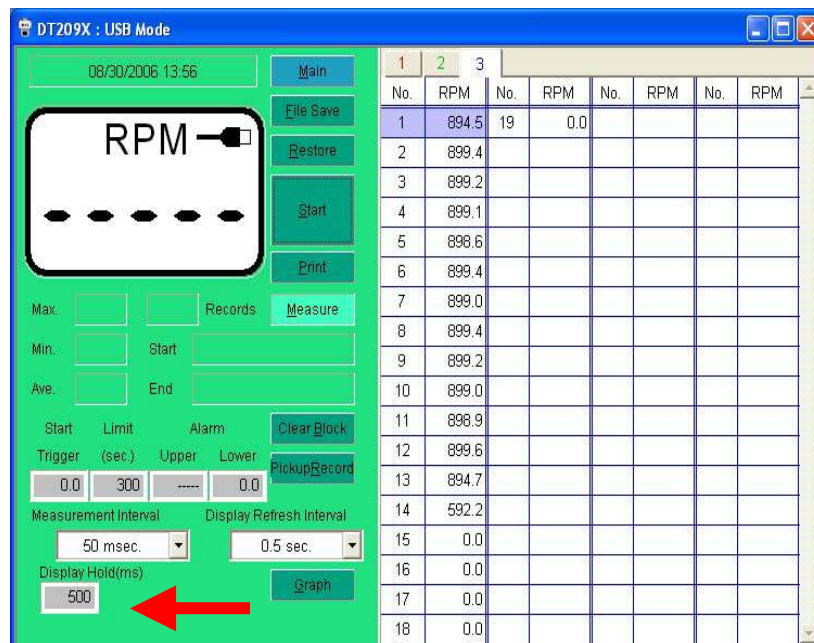
Range: 50 – 99,999 msecs

Feature only available in USB mode

Default setting: 0 (same as 10,000 msec).

Limitation of Feature:

- The Display hold feature should be set at least twice as much as the Measurement Interval Value. If the values are set the same there is a possibility that the lower readings (less than 100 RPM) may not be recognized depending on how fast the Measurement Interval Value is set.
- If setting is set below 50 msec, the software will automatically adjust it to 10,000 msec (10 seconds).
- For Low RPM it is recommended that the Display Hold setting should be set to a minimum of 1,000 msec (1 second).
- If the tachometer is reading “0 “ for speeds less than 100 RPM please adjust the Display hold value.



Location of the Display hold Feature as shown by the arrow.

Troubleshooting Section

Problems	Solution
Software would not start, "Start" button and "Download" button inactive.	Check mode selector switch. Set to USB MODE. Check cable connection and USB Icon.
Computer found new hardware, but could not find compatible drivers	Uninstall and reinstall DT-209X USB Drivers, check the CD included in your Kit.
Could not find software after installation	Program is installed under the name "NIDEC-SHIMPO". Access list of programs from the Start Menu.
Laser is not visible after the DT-209X is connected to the PC	Control of the tachometer is transferred to the DT-209X, the laser would not activate until Start is pressed under USB mode. WARNING: Do not stare into the laser opening. Laser beam harmful to the eyes.
Unit selector switch not working.	Check the mode selector switch: for portable and outside measurements the tachometer needs to be in Standard Mode (STD) or Average Mode (AVE). For online measurements the DT-209X needs to be in USB.
Battery discharges earlier than expected.	Before storing the DT-209X make sure that the mode selector switch is not set to USB mode (When set to USB mode the tachometer will not allow the auto power off feature to activate). Make sure that the power button is not pressed.
Analog output not working.	Check the polarity of connectors; it should deliver a 0 to 1 V analog output proportional to the reading.
Could not open saved CSV file	Check other modes for opening the file. The file saved in Average mode cannot be open in Standard or USB Mode.
Could not print graph	Check printer connection. If the button is inactive close graph window and press STOP. (Graph cannot be printed while measurement is taking place).
Error in printing table and graph	There are some versions of Windows 2000 that does not allow printing from the DT-209X software, save and open CSV file in Microsoft EXCEL and print from there.
USB cable plugged in, but there is no connection	While the software is open, unplug and plug back in the USB cable until the USB Icon indicator establishes connection.
Could not establish connection with the DT-209X	Uninstall and reinstall DT-209X USB Drivers, check the CD included in your Kit. Choose the right operating system for your Computer Windows XP or Windows 2000. USB cable maybe damaged.

Measured value is divided by 2	There are two versions of the DT-209X, Standard Version DT-209X is set for 6 inch circumference wheel, and DT-209X-S12 is set to 12-inch circumference wheel. Check the front label for proper wheel attachments.
While storing values it shows "CCCCC"	The memory button was pressed for 5 seconds.
Could not measure Yards, feet, inches and meters per minute	These linear rate measurements are available in contact mode using the wheel attachment.
Could not measure length	These measurements are available in contact mode, using the wheel attachment.
Brand new batteries no display.	Check battery orientation and reinstall.
While using the software, could not see values stored on the table immediately.	Check the trigger setting values.
Found new hardware icon appears every time the DT-209X is plugged in to the computer. (Even after previous installation of USB driver was successful.)	Different USB port. For every USB port that will be used, the USB driver is required to be installed.