

# PosiTest<sup>®</sup> *Accurate & Dependable*

*For the non-destructive measurement of non-magnetic coatings (paint, enamel, galvanizing, metalizing, plating, etc.) on STEEL*



Stable design with additional tail-end support. No annoying rocking during measurement.

# PosiTest<sup>®</sup> *Accurate & Dependable*

**For the non-destructive measurement of non-magnetic coatings (paint, enamel, galvanizing, metalizing, plating, etc.) on STEEL**

## ACCURATE

- Certificate of Calibration showing traceability to N.I.S.T. included with every gage
- Matching Calibration Standards and Procedures available for every model
- Highly wear resistant Carbide Probe for longest life and continuous accuracy
- Remove center of dial cover for easy calibration adjustment
- Conforms to national and international standards

## DURABLE

- Extra rugged housing, not affected by mechanical shock, water, acid or solvents
- Unique overall design, fully supported, positive positioning, no pivoting tendencies during measurement
- Can be used fully supported or with only the front probe area contacting the surface
- Functions on a permanent rare-earth cobalt magnet
- No batteries/electronics
- 2 year warranty

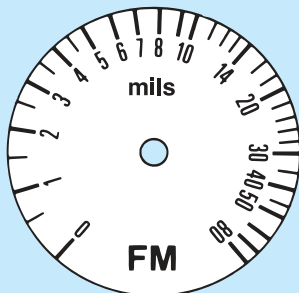
## EASY TO USE

- Positive visual and audible indicators to designate when thickness reading is established
- "V" grooves in probe housing and Gage base allow correct positioning on cylindrical objects
- Compact, lightweight, precisely balanced, independent of gravity – can be used in any position
- GO/NO-GO button can be pre-set for rapid measurement
- Probe contact and dial rotation all in a one-finger operation
- Furnished with wrist strap and instructions in a high quality leather case with belt loops for your convenience



Carbide measuring probe for long life.

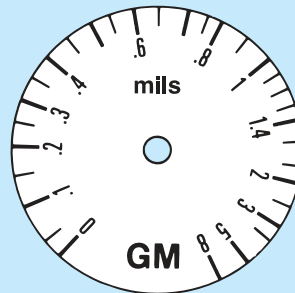
**FOR: Hot dip galvanizing, hard chrome metalizing, paint, enamel coatings on steel**



Scale FM 0–80 mils  
Tolerance: ±0.2 mils up to 4 mils  
±5% of the reading over 4 mils

Scale F 0–2000 microns  
Tolerance: ±5 microns up to 100 microns  
±5% of the reading over 100 microns

**FOR: Electroplating, thin paint films, phosphating on steel**



Scale GM 0–8 mils  
Tolerance: ±0.04 mils up to 0.8 mils  
±5% of the reading over 0.8 mils

Scale G 0–200 microns  
Tolerance: ±1 micron up to 20 microns  
±5% of the reading over 20 microns

Visit us on the World Wide Web at [www.checkline.com](http://www.checkline.com)

**ELECTROMATIC** Equipment Co., Inc., 600 Oakland Ave., Cedarhurst, NY 11516 – USA  
Tel: 800-645-4330 (USA & Canada) ■ Tel: (516) 295-4300 ■ Fax: (516) 295-4399