

PosiTector® **DPM**

Dew Point Meter

NEW

**Ideal
for Outdoor
and Indoor
Use**

Measures and records climatic parameters including: Relative humidity, air temperature, surface temperature, dew point temperature and difference between surface and dew point temperatures. Ideal for surface preparation as required by ISO 8502-4.



*Magnetic surface
temperature probe available
for hands-free recording*

The Measure of Quality

PosiTector® Dew Point Meter

A New Level of Confidence for painting contractors & inspectors.

D A T A S E T	
MEASURES	CALCULATES
RH – relative humidity	T _d – dew point temperature
T _a – air temperature	Δ – the difference between surface and dew point temperatures
T _s – surface temperature	

Simple

- Large, easy-to-read, graphics LCD with multilingual support
- One-handed menu navigation
- Audio and visual alarm – indicates when climatic conditions are unsuitable for painting
- No need to consult complex tables or use a slide rule calculator
- Bi-color indicator light – ideal in a noisy environment
- All 5 parameters are constantly updated and displayed simultaneously
- Graph mode charts all 5 parameters for quick analysis

Durable

- Rugged, outdoor/indoor instrument
- Solvent, acid, oil, water and dust resistant – meets or exceeds IP5X
- Scratch/Solvent resistant display suitable for harsh environments
- Shock-absorbing, protective rubber holster with belt clip and wrist strap
- Two (2) year warranty on both body and sensors

Accurate

- Fast response precision sensors provide accurate, repeatable readings with high reliability and long term stability
- Smart Trend Indicators identify rising, falling or stable readings
- Certificate of Calibration showing traceability to NIST included
- Conforms to national and international standards including ISO 8502-4, BS 7079-B4, and ASTM D3276

Versatile

- Internal Memory stores 2,500 datasets in 100 batches with the simple touch of a button
- Data Logger Mode automatically records all 5 parameters at user selected time intervals. Ideal for unattended operation.
- Built-in clock – date and time stamps each stored measurement
- Easily converts to accept optional probes including magnetic and hand-held surface temperature probes
- USB and IR ports for downloading to a PC or printer
- Celsius/Fahrenheit switchable
- Backlit display for dim or dark environments

Tough **NEW** Features

- USB/IR Ports for downloading to a PC or printer

- Solvent, acid, oil, water and dust resistant—meets or exceeds IP5X

- Scratch and solvent resistant lens

DPM shown in Graph Mode

- Thick impact-resistant Lexan® display

- Bi-color indicator light

- Hi-grade, industrial strength housing

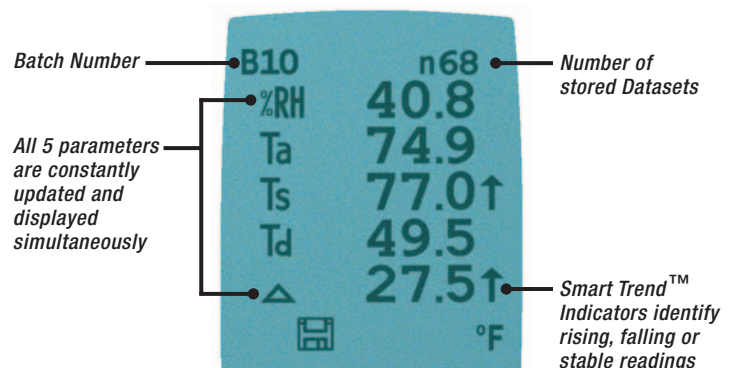
- Shock-absorbing, protective rubber holster with belt clip and wrist strap

- Air temperature and humidity sensor

- Built-in thermocouple surface temperature sensor

- White sensor housing reduces the effect of direct sunlight

Example of Memory Mode Display



The PosiTector DPM stores 2,500 datasets. Individual parameters can be viewed on the LCD, viewed graphically for quick trend analysis on-site, or downloaded to a printer or PC.

40:RH	80.4
04:12 Ta	51.8
Ts	51.7
Td	46.0
△	5.7
41:RH	84.3
04:27 Ta	51.8
Ts	51.6
Td	47.2
△	4.4

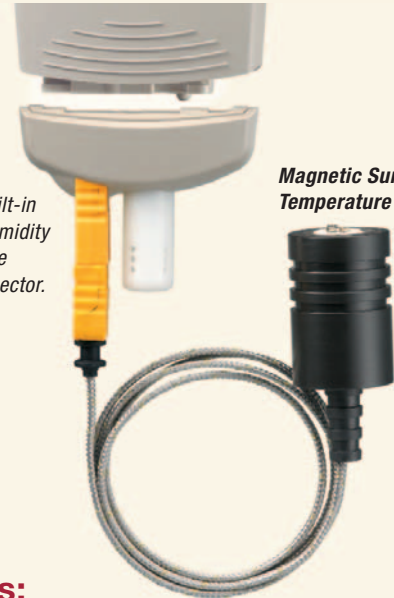


Magnetic Surface Temperature Kit (optional)

allows the instrument and surface temperature probe to be conveniently attached onto steel structures for hands-free recording. Ideal for unattended data logging during the work shift and overnight.

Interchangeable lower unit with built-in air temperature/humidity sensor and a K-type thermocouple connector.

Magnetic Surface Temperature Probe



Flip Display enables right-side-up viewing in any position.



Kit includes:

- Interchangeable lower unit with built-in air temperature/humidity sensor and a K-type connector that accepts the magnetic surface temperature probe
- Magnetic surface temperature probe with armored cable and locking device to prevent accidental disconnection from the instrument during unattended operation
- Additional rubber holster with magnetic clip to attach the instrument body onto steel structures
- PosiSoft Software and USB cable
- Durable, hard shell carrying case
- Certificate of Calibration

- Accepts other optional K-type thermocouple probes including:
 - **Hand-held Surface Temperature Probe** – for spot checking hard-to-reach surfaces
 - **Self-adhering Surface Temperature Probe** – sticks to solid materials including aluminum, wood, concrete, etc. Ideal for unattended monitoring.
 - **Liquid Temperature Probe** – general purpose probe with stainless steel shaft

Specifications	Range	Accuracy	Resolution
Surface Temperature	-40° to 80° C	± 0.5° C	0.1° C
	80° to 190° C	± 1.5° C	
	-40° to 175° F	± 1° F	0.1° F
	175° to 375° F	± 3° F	
Air Temperature	-40° to 80° C	± 0.5° C	0.1° C
	-40° to 175° F	± 1° F	0.1° F
Humidity	0 to 100%	± 3%	0.1%

Options

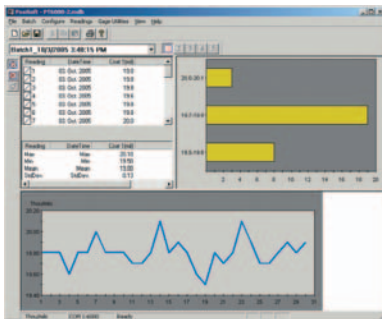
Magnetic Surface Temperature Kit – see details on previous page

Additional Probes for use with Magnetic Surface Temperature Kit only

- **Hand-held Surface Temperature Probe** for spot checking hard-to-reach surfaces.
- **Self-adhering Surface Temperature Probe** sticks to solid materials including aluminum, wood, concrete, etc. Ideal for unattended monitoring.
- **Liquid Temperature Probe** is a general purpose probe with stainless steel shaft.

PosiSoft® for Windows® analysis software

- Downloads stored datasets to a PC
- Allows entry of notes and annotations
- Prints and displays basic charts and histograms
- Exports to a document or spreadsheet
- Includes USB cable
- Free updates



AC Power Cable for continuous operation.

IR Printer receives data via wireless infrared.



PosiTector DPM Comes Complete with humidity, air and surface temperature sensors, protective rubber holster with belt clip and wrist strap, 3 AAA batteries, instructions, nylon carrying case with shoulder strap, Certificate of Calibration traceable to NIST, two (2) year warranty.

Size: 178 x 64 x 31 mm (7" x 2.5" x 1.2")

Weight: 185 g (6.5 oz.) without batteries

Conforms to ISO 8502-4, BS 7079-B4, and ASTM D3276

