

High Speed

YARN & FIBER TENSION SENSOR

Model TP

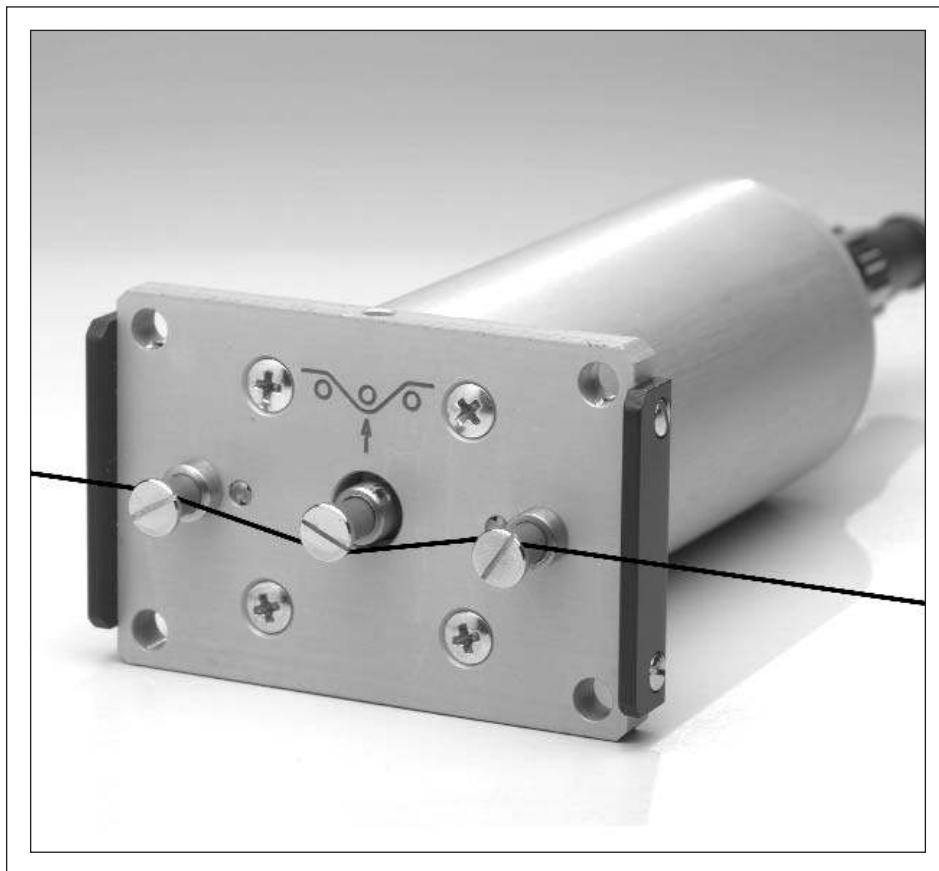
4 Tension Ranges

0–50 g up to 0–500 g

Non-rotating ceramic pins make the Model TP sensor ideal for yarns and fibers running at speeds up to 6,000 m/min.

FEATURES

- Precision strain gauge sensing for highest accuracy and repeatability
- 0–1 V DC output, proportional to tension (0–10 V DC optional)
- Frequency response of 100 Hz
- Surface mount electronics provide long-term reliability
- 4mm diameter oxide ceramic pins are rated for filament speeds up to 6,000 m/min.
- Optional connecting cable



TENSION RANGES

| Part Number | Measuring Range (grams) |
|-------------|-------------------------|
| TP-50 | 0–50 |
| TP-100 | 0–100 |
| TP-200 | 0–200 |
| TP-500 | 0–500 |

Specifications

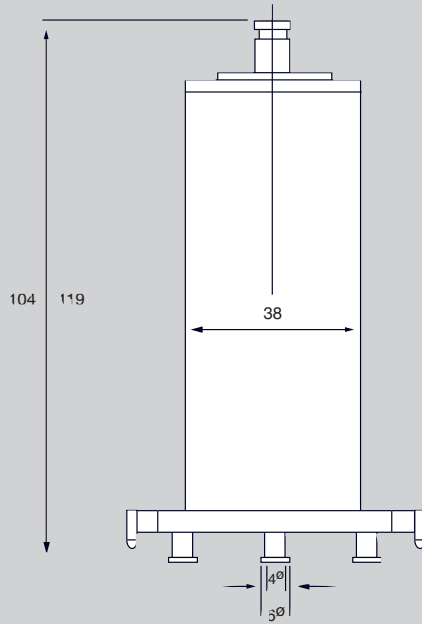
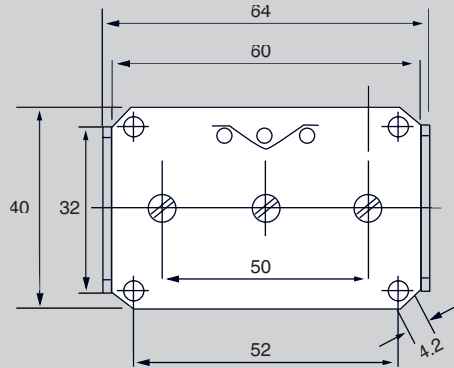
| | | | |
|------------------------------------|--|---------------------------------|------------------------|
| Accuracy | ±1% FS (10–90% of range) ±3% FS (balance of range) | Middle Roller Deflection | 0.5mm (maximum) |
| Regulated Sensor Excitation | 12–15 VDC (–) @ 10 mA 12–15 VDC (+) @ 20 mA | Overload Rating | 150% FS |
| Sensor Output | 0–1 V DC (standard), 0–10 V DC (optional), proportional to tension | Housing Material | Aluminum |
| | | Operating Temp. | 40 to 105 °F (5–40 °C) |
| | | Spacing of Outer Pins | 40mm (c:c) |
| | | Maximum Linear Speed | 6,000 m/min |

MODEL TP

TECHNICAL DATA & SPECIFICATIONS

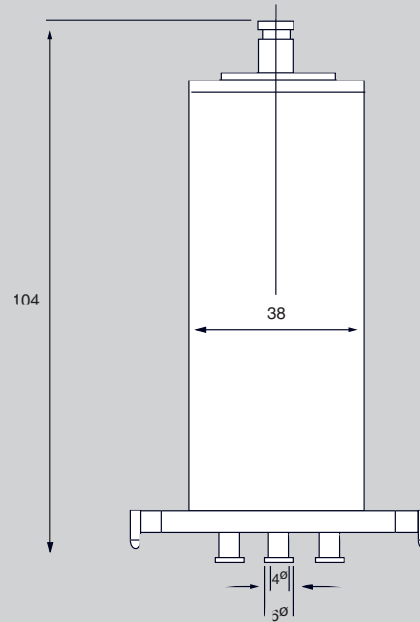
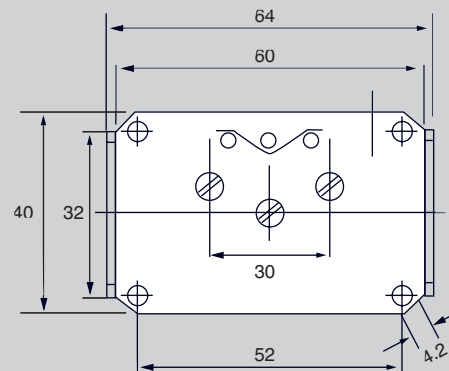
Dimensions (50 g and 100 g)

All dimensions in mm



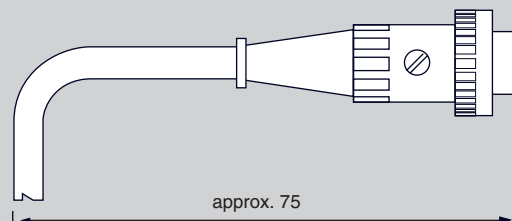
Dimensions (200 g and 500 g)

All dimensions in mm



Output Plug

All dimensions in mm



ELECTROMATIC

EQUIPMENT CO., INC.

600 Oakland Ave., Cedarhurst, NY 11516-U.S.A.
TEL 516-295-4300 • FAX 516-295-4399

For additional information
or to place an order
CALL TOLL FREE
1-800-645-4330

Visit our web site at <http://www.checkline.com>